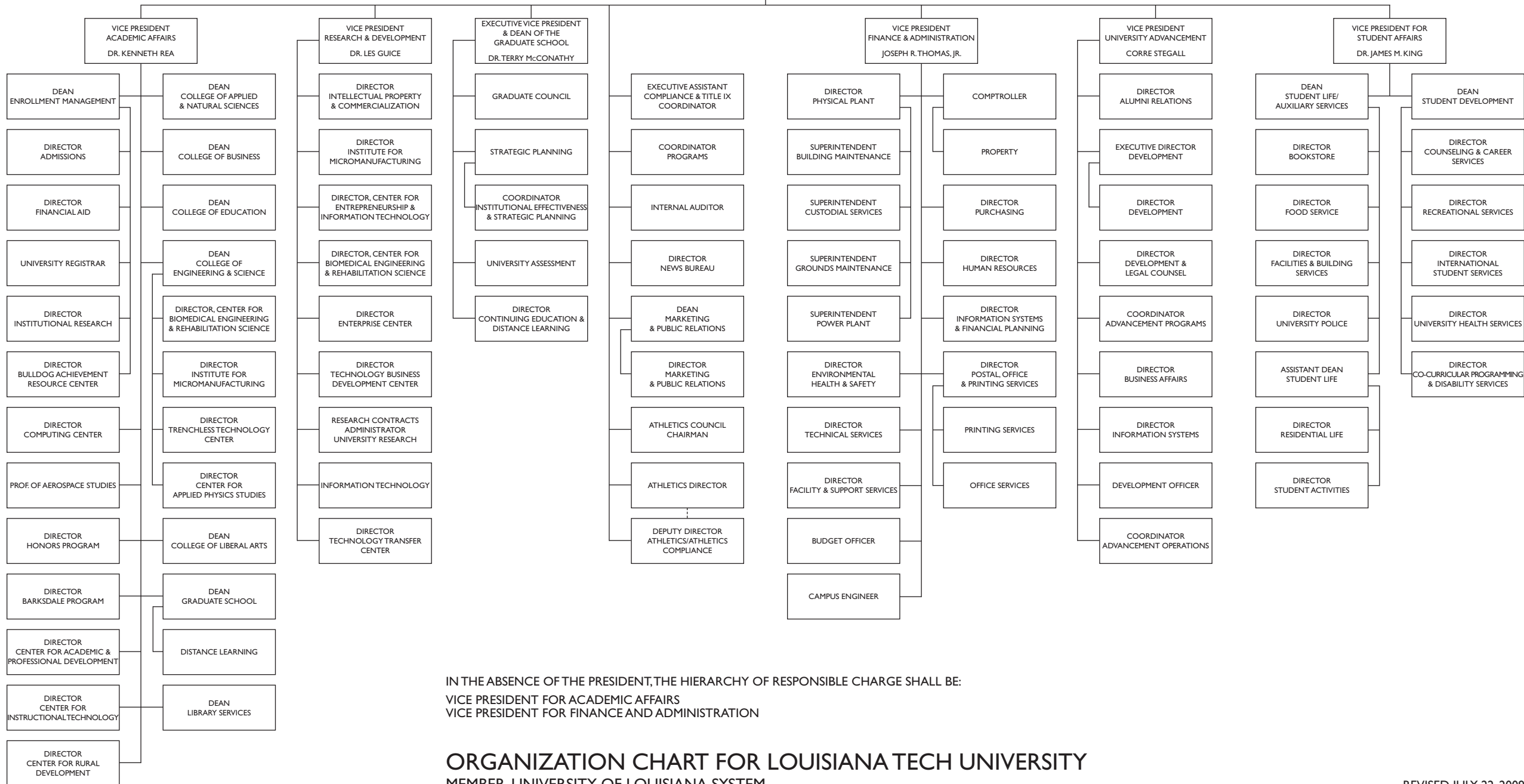


**UNIVERSITY OF LOUISIANA SYSTEM  
BOARD OF SUPERVISORS**

**PRESIDENT  
DR. DANIEL D. RENEAU**



IN THE ABSENCE OF THE PRESIDENT, THE HIERARCHY OF RESPONSIBLE CHARGE SHALL BE:  
 VICE PRESIDENT FOR ACADEMIC AFFAIRS  
 VICE PRESIDENT FOR FINANCE AND ADMINISTRATION

**ORGANIZATION CHART FOR LOUISIANA TECH UNIVERSITY  
MEMBER, UNIVERSITY OF LOUISIANA SYSTEM**