



US009064159B2

(12) **United States Patent**  
**Phoha**

(10) **Patent No.:** **US 9,064,159 B2**  
(45) **Date of Patent:** **Jun. 23, 2015**

(54) **METHOD AND APPARATUS TO RELATE BIOMETRIC SAMPLES TO TARGET FAR AND FRR WITH PREDETERMINED CONFIDENCE LEVELS**

(71) Applicant: **Vir V. Phoha**, Rustin, LA (US)

(72) Inventor: **Vir V. Phoha**, Rustin, LA (US)

(73) Assignee: **Louisiana Tech University Foundation, Inc.**, Ruston, LA (US)

(\* ) Notice: Subject to any disclaimer, the term of this patent is extended or adjusted under 35 U.S.C. 154(b) by 48 days.

(21) Appl. No.: **14/069,980**

(22) Filed: **Nov. 1, 2013**

(65) **Prior Publication Data**

US 2014/0056488 A1 Feb. 27, 2014

**Related U.S. Application Data**

(63) Continuation of application No. 13/111,919, filed on May 19, 2011, now Pat. No. 8,600,119, which is a continuation of application No. 12/868,657, filed on Aug. 25, 2010, now Pat. No. 7,986,818, which is a continuation of application No. 11/503,427, filed on Aug. 10, 2006, now Pat. No. 7,809,170.

(51) **Int. Cl.**

**G06K 9/00** (2006.01)  
**G06F 21/00** (2013.01)  
**G10L 17/00** (2013.01)  
**G06K 9/62** (2006.01)

(52) **U.S. Cl.**

CPC ..... **G06K 9/00892** (2013.01); **G06K 9/6288** (2013.01)

(58) **Field of Classification Search**

USPC ..... 382/115, 160, 209; 716/186; 704/246; 902/3; 340/5.8

See application file for complete search history.

(56) **References Cited**

U.S. PATENT DOCUMENTS

4,685,140	A	8/1987	Mount, II
4,805,222	A	2/1989	Young et al.
5,056,141	A	10/1991	Dyke
5,208,869	A	5/1993	Holt
5,491,698	A	2/1996	Patel et al.
5,557,686	A	9/1996	Brown et al.
5,617,490	A	4/1997	Kume et al.
5,806,030	A	9/1998	Junqua
6,591,224	B1	7/2003	Sullivan et al.
7,167,583	B1	1/2007	Lipson et al.
7,336,814	B2	2/2008	Boca et al.
7,409,371	B1*	8/2008	Heckerman et al. .... 706/12

(Continued)

OTHER PUBLICATIONS

Louisiana Tech University, Final Office Action mailed Feb. 11, 2011 for U.S. Appl. No. 12/868,657. 25 pages.

(Continued)

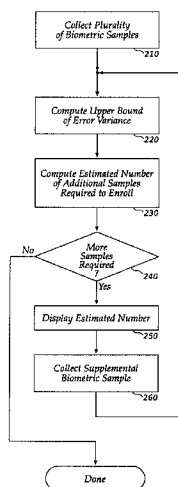
*Primary Examiner* — Kathleen Y Dulaney

(74) *Attorney, Agent, or Firm* — Blakely Sokoloff Taylor & Zafman LLP

(57) **ABSTRACT**

At least two biometric measurements of a person are collected, then a statistical measure based on the measurements is computed. The statistical measure is a bounded estimate of the discriminative power of a test based on the measurements. While the discriminative power is less than a target value, additional biometric measurements are collected. When enough measurements have been collected, a biometric template is constructed from the measurements and stored for use in future identifications. Systems and software to implement similar methods are also described and claimed.

**22 Claims, 3 Drawing Sheets**



(56)

**References Cited**

U.S. PATENT DOCUMENTS

7,493,340 B2 2/2009 Rui  
2002/0081033 A1 6/2002 Stentiford  
2002/0184019 A1 12/2002 Hartley et al.  
2003/0212544 A1 11/2003 Acero et al.  
2004/0053242 A1 3/2004 Volker et al.  
2004/0091136 A1 5/2004 Dombrowski  
2004/0193019 A1 9/2004 Wei  
2004/0236573 A1 11/2004 Sapeluk et al.  
2005/0102665 A1 5/2005 Barta et al.  
2005/0180547 A1 8/2005 Pascovici  
2005/0265618 A1 12/2005 Jebara  
2006/0018523 A1 1/2006 Saitoh et al.  
2006/0074656 A1 4/2006 Mathias et al.  
2006/0173673 A1 8/2006 Jeong et al.  
2006/0287856 A1 12/2006 He et al.

2007/0174308 A1 7/2007 Rausch  
2007/0177773 A1 8/2007 Hu et al.  
2007/0180261 A1 8/2007 Akkermans et al.  
2007/0203707 A1\* 8/2007 Carus et al. .... 704/270  
2007/0217676 A1 9/2007 Grauman et al.  
2007/0241861 A1 10/2007 Venkatanna et al.

OTHER PUBLICATIONS

Louisiana Tech University, Non Final Office Action mailed Dec. 7, 2010 for U.S. Appl. No. 12/868,657.  
Louisiana Tech University, Non-Final Office Action mailed Dec. 30, 2011 for U.S. Appl. No. 13/111,919. 15 pages.  
Penn State Research Foundation, et al., Non final office action dated Jan. 14, 2010 for U.S. Appl. No. 11/503,427.  
Penn State Research Foundation, Final office action dated May 24, 2010 for U.S. Appl. No. 11/503,427.

\* cited by examiner

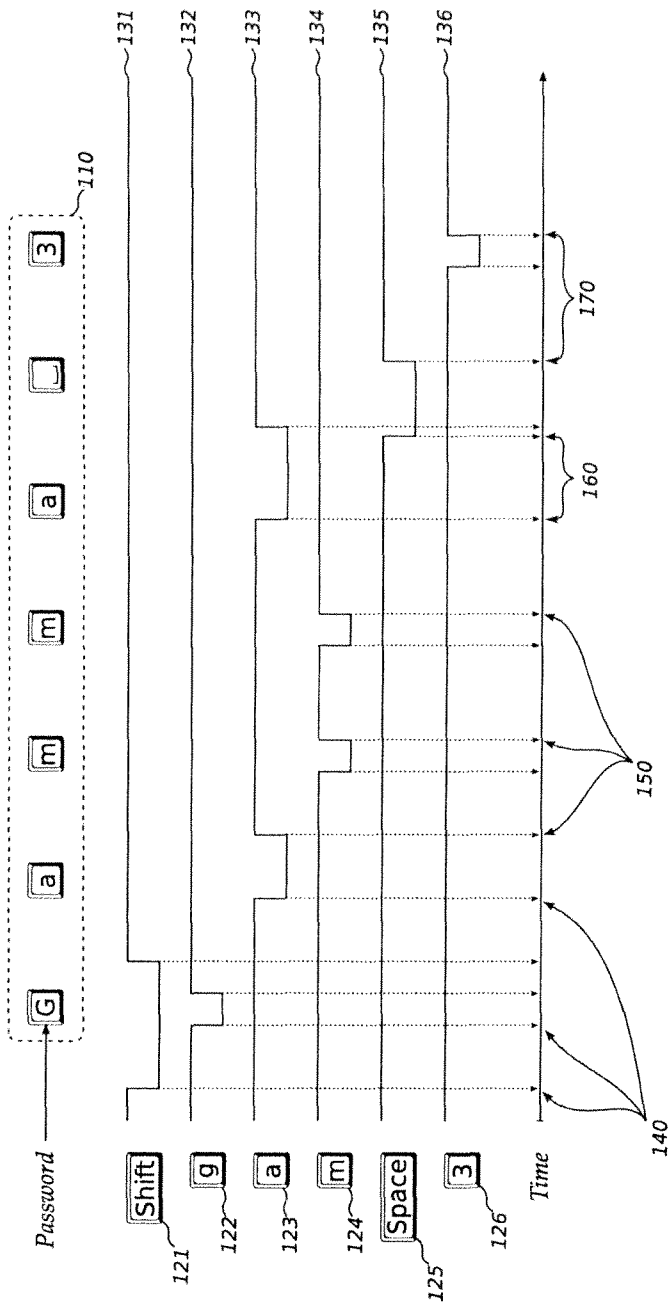


Fig 1

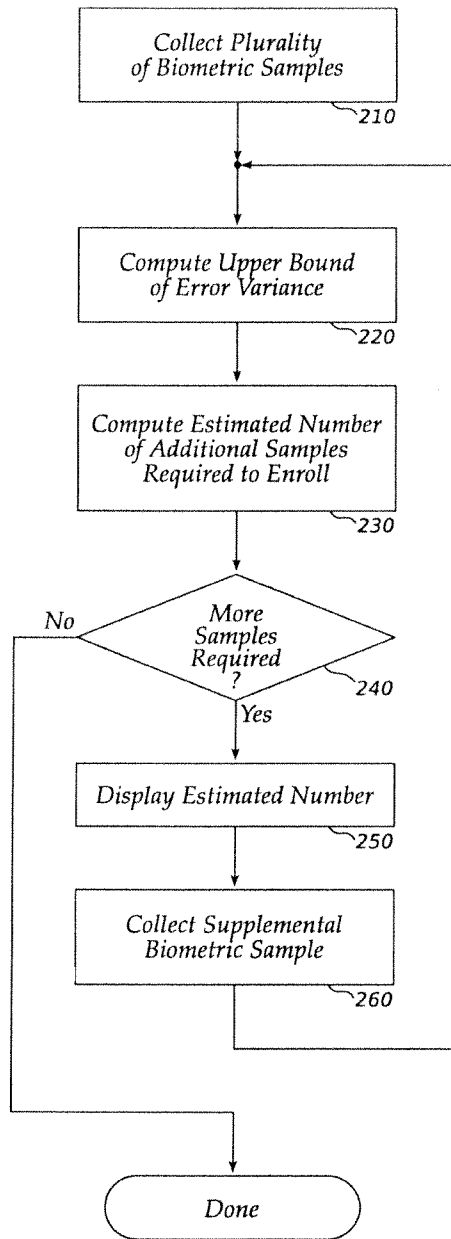
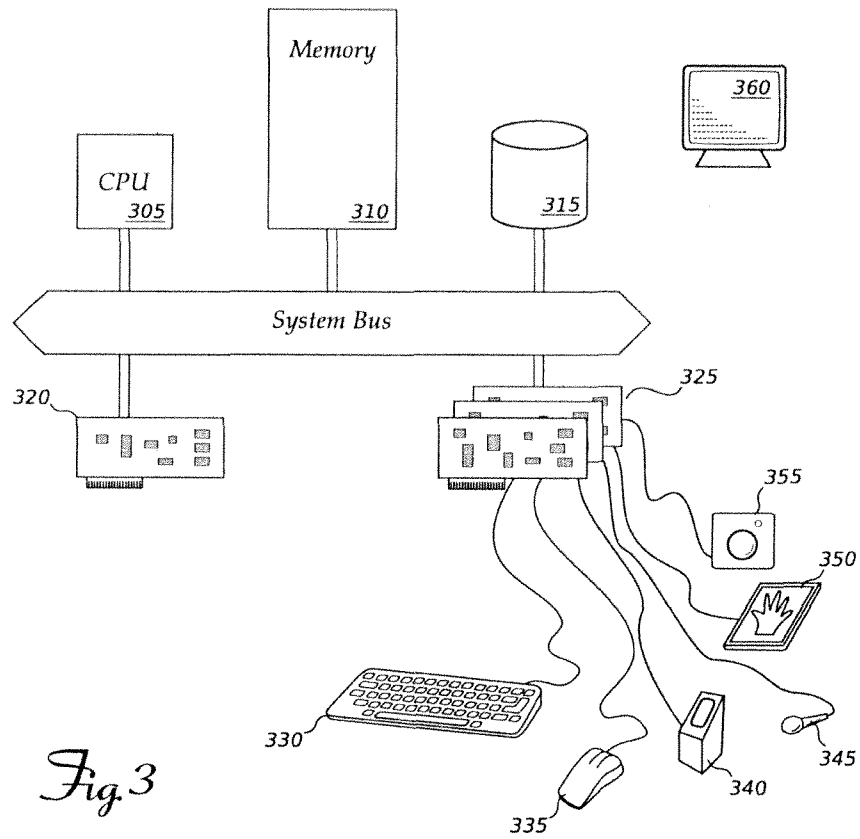
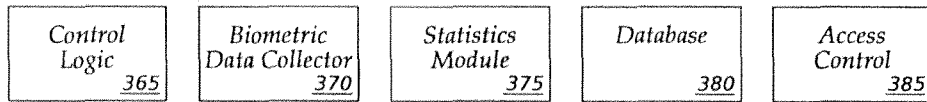


Fig. 2



1

**METHOD AND APPARATUS TO RELATE  
BIOMETRIC SAMPLES TO TARGET FAR  
AND FRR WITH PREDETERMINED  
CONFIDENCE LEVELS**

CROSS-REFERENCE TO RELATED  
APPLICATION

The application is a continuation of U.S. patent application Ser. No. 13/111,919 filed May 19, 2011, which issued as U.S. Pat. No. 8,600,119, on Dec. 3, 2013, which is a continuation of U.S. patent application Ser. No. 12/868,657, filed Aug. 25, 2010 issued as U.S. Pat. No. 7,986,818 on Jul. 26, 2011, which is a continuation of U.S. patent application Ser. No. 11/503,427, filed Aug. 10, 2006 issued as U.S. Pat. No. 7,809,170 on Oct. 5, 2010.

FIELD

The invention relates to training biometric authentication systems. More specifically, the invention relates to selecting an adequate number of training samples to achieve a desired level of authentication performance, and evaluating the level of authentication performance that may be expected from a set of training samples.

BACKGROUND

Biometric identification and authentication systems measure physical and/or behavioral characteristics of a person and compare the characteristics to an earlier-prepared sample or "template" to determine whether the measurements were taken from the same person. This determination can be used to control access to tangible or intangible assets and resources on a per-person basis. Other systems based on a physical or informational key (e.g. an actual key, an electronic identification card, or a password) cannot restrict access to a particular person, since the person can transfer the key or password to someone else.

The measurements taken by a biometric system typically vary slightly at each measurement, so the comparison process must accommodate such slight variances. The accuracy of a biometric identification is inversely proportional to the amount of variability tolerated in a set of measurements: if more variability is permitted in measurements, then it becomes easier for an impostor to fool the system. On the other hand, as the permissible variability is reduced, legitimate users are more likely to be rejected due to normal measurement variances. Two key metrics describing the performance of a biometric identification system are the false reject ratio ("FRR" or " $\alpha$ ," the probability of legitimate user erroneously being rejected as an impostor), and the false accept ratio ("FAR" or " $\beta$ ," the probability of an impostor erroneously being identified as a legitimate user). Administrators of biometric identification systems often tune the system's parameters to achieve a FAR and FRR that balance the security requirements of the resource protected by the system against the inconvenience to legitimate users of erroneous rejections.

One difficulty encountered in operating a biometric identification system is that of enrolling users into the system. Because of the previously-mentioned measurement variances, many systems require a new enrollee to provide a large number of measurement samples so the system can build a template that will permit accurate identifications later. Providing many samples can be tedious or inconvenient for the new user. Formal methods of evaluating samples to determine

2

when "enough" have been collected, and of estimating identification performance that may be expected given a set of samples, may improve the usefulness and convenience of biometric identification systems.

5

BRIEF DESCRIPTION OF DRAWINGS

Embodiments are illustrated by way of example and not by way of limitation in the figures of the accompanying drawings in which like references indicate similar elements. It should be noted that references to "an" or "one" embodiment in this disclosure are not necessarily to the same embodiment, and such references mean "at least one."

FIG. 1 illustrates one method for collecting biometric measurements of a user. The measurements can serve as input to an embodiment of the invention.

FIG. 2 is a flow chart of operations according to an embodiment of the invention.

FIG. 3 shows a data processing system including physical and logical elements that implement an embodiment of the invention.

DETAILED DESCRIPTION

This disclosure presents an analysis of variance-based methods to estimate the number of samples required to achieve a desired level of discriminative performance from a biometric-measurement-based identification system. Formal mathematical methods are used to explain the operation of systems and methods according to embodiments of the invention.

For concreteness, the following discussion will focus on keystroke or typing rhythm patterns as the biometric measurement source. However, it will be apparent to those of ordinary skill in the relevant arts that the methods discussed here can be applied to other biometric measurements, such as fingerprint images, hand geometry measurements, voice recordings, iris and retina patterns, and other similar data.

FIG. 1 shows some data that can be collected as a user types characters on a keyboard. The characters typed in the example depicted are those of password **110**, "Gamma 3". Trace lines **131-136** indicate the press/release state of keyboard keys **121-126**, respectively. Time measurements are taken as each key is pressed (**140**) and released (**150**). Derivative timing measurements such as the time between consecutive key presses (**160**) or consecutive key releases (**170**) may also be computed from key press and key release times and included in a biometric measurement.

Note that typing a multi-character string once results in the generation of a plurality of timing measurements. In this disclosure, a single "biometric measurement" is considered to be a plurality of scalar quantities. It is convenient to think of a biometric measurement as a vector. In accordance with common academic practice, vectors will be indicated by bold, upper-case letters (e.g. "Y"), while the scalar quantities that make up a vector are indicated by subscripted, upper-case, italic letters (e.g. " $Y_1$ "). One of a plurality of biometric measurements will be indicated as a subscripted vector (e.g. " $Y_2$ "). One scalar quantity out of a plurality of biometric measurement vectors will be indicated as " $Y_{ij}$ " (the  $j^{\text{th}}$  scalar quantity of the  $i^{\text{th}}$  biometric measurement vector).

Biometric measurement values are modeled as

$$Y_{ij} = \mu_j + \epsilon_{ij} \quad \text{Eq. 1}$$

where  $1 \leq i \leq n$  (the number of independent biometric measurements collected) and  $1 \leq j \leq m$  (the number of scalar elements in each biometric measurement).  $\mu_j$  is the mean of the  $j^{\text{th}}$  element, and  $\epsilon_{ij}$  is an error random variable with a mean of zero.

$\mu_j$  can be rewritten as  $\mu + \tau_j$ , where  $\mu$  is a constant and  $\tau_j$  represents the positive or negative deviation of the  $j^{th}$  measurement from this constant. Thus, we have

$$Y_{ij} = \mu + \tau_j + \epsilon_{ij} \tag{Eq. 2}$$

A simplifying assumption used here is that  $\epsilon_{ij}$  are mutually independent.

Further comments regarding notation: dot (e.g. “ $Y_{\bullet j}$ ”) means “add over all the values of the subscript replaced with a dot,” and the bar (e.g. “ $\bar{Y}_{\bullet j}$ ”) means “divide by the number of terms that have been added up (i.e., compute the average).” Finally, the standard deviation of a column-wise set of scalar measurements will be denoted as  $\sigma_{Y_{\bullet j}}$ .

The mean of each measurement element in a sequence of biometric measurement vectors may be different. For example, consider the vectors obtained by recording key press times while a user types the password “Gamma 3” several times. These times are shown in Table 1 (all in milliseconds):

TABLE 1

Trial ( $1 \leq i \leq m$ )	Element ( $1 \leq j \leq n$ )							
	shift	G	a	m	m	a	space	3
1	144	192	112	160	80	112	272	
2	144	160	112	144	80	96	224	
3	160	288	144	160	64	112	192	
4	144	192	112	144	176	128	240	
5	144	192	128	160	48	128	224	
$\bar{Y}_{\bullet j}$	147.20	204.80	121.60	153.60	89.60	115.20	230.40	
$\sigma_{Y_{\bullet j}}$	7.16	48.53	14.31	8.76	50.09	13.39	29.07	

The table shows that the “G” key is struck, on average, 147.20 ms after the “shift” key, and the first “a” keystroke occurs, on average, 204.80 ms after the “G.” (The first column, “shift,” is blank because that key is the first key struck and serves only to mark the beginning of a trial.) Elements of other vectors of biometric measurements will also, in general, have different means. However, if the measurements are transformed as:

$$Y_{ij} \leftarrow \frac{Y_{ij} - \bar{Y}_{\bullet j}}{\sigma_{Y_{\bullet j}}} \tag{Eq. 3}$$

the measurements may be dealt with as random variables of zero mean and unit variance (standard normal variables). This transformation can be thought of as shifting the means of corresponding measurements to coincide at zero, and scaling the samples so that the variance of each set of corresponding samples is one. Thus transformed, the measurements can be treated more uniformly. For example, an estimate of sum of squares for errors is given by

$$ssE = \sum_j \sum_i (Y_{ij} - \bar{Y}_{\bullet j})^2 \tag{Eq. 4}$$

and an estimate of mean square for error is given by

$$msE = \frac{ssE}{m - n} \tag{Eq. 5}$$

Similarly, the sum of squares of measurement elements is given by

$$ssL = \sum_j m(Y_{\bullet j} - \bar{Y}_{\bullet\bullet})^2 \tag{Eq. 6}$$

and the mean square measurement is

$$msL = \frac{ssL}{n - 1} \tag{Eq. 7}$$

With these quantities defined, we can derive the upper confidence limit for  $\sigma^2$  as

$$P\left(\frac{SSE}{\sigma^2} \geq \chi_{m-n, 1-\alpha}^2\right) = 1 - \alpha \tag{Eq. 8}$$

where  $\chi_{m-n, 1-\alpha}^2$  is the percentile of the chi-squared distribution with probability of  $1-\alpha$  in the right-hand tail, because

$$\frac{SSE}{\sigma^2}$$

follows the  $\chi^2$  distribution. Replacing SSE by its observed value  $ssE$  (Eq. 4) gives a one-sided  $100(1-\alpha)\%$  confidence bound for  $\sigma^2$ :

$$\sigma^2 \leq \frac{ssE}{\chi_{m-n, 1-\alpha}^2} \tag{Eq. 9}$$

This is the upper bound for the error ( $\epsilon$ ) variance.

This result is significant because it relates an important variable describing biometric identification system performance ( $\alpha$ ) to the samples collected while enrolling a new user. Thus, it becomes possible to answer the questions, “given the samples collected, how can the system be expected

5

to perform?” And conversely, “are the samples that have been collected consistent enough to achieve a desired level of performance?”

It is also possible to calculate the number of (additional) biometric measurements likely to be required to achieve target values for false reject ratio (“FRR” or “ $\alpha$ ”) and false accept ratio (“FAR” or “ $\beta$ ”), given the variance ( $\sigma^2$ ) of the samples already collected. Let  $\Pi(\Delta)=(1-\beta)$  denote the power of the F-test at  $\Delta$ , which is the probability of rejecting a hypothesis  $H_0=\{\tau_1, \dots, \tau_m\}$  when at least two of the elements differ by  $\Delta$ . Thus for given values of  $\Delta$ ,  $\Pi(\Delta)$ ,  $m$ , and  $\alpha$ , and variance  $\sigma^2$  of the data being collected, we can calculate how many more samples are needed.

Given a hypothesis  $H_0$  against  $H_A$ : {at least two  $\tau_j$ s differ} is given by reject  $H_0$  if

$$\frac{msL}{msE} > F_{m-1, n-m, \alpha}$$

If the null hypothesis is correct then

$$\frac{msL}{msE}$$

has an F distribution, but if the null hypothesis is incorrect then

$$\frac{msL}{msE}$$

has a non-central F distribution  $F_{m-1, n-m, \delta^2}$  where the non-centrality parameter  $\delta^2$  is given by:

$$\delta^2 = \frac{(m-1)Q(\tau_j)}{\sigma^2} \tag{Eq. 10}$$

where

$$Q(\tau_j) = \sum_i r_i \left( \tau_i - \sum_h r_h \tau_h / n \right)^2 / (m-1) \tag{Eq. 11}$$

Thus, when  $Q(\tau_j)=0$  then  $\delta^2=0$  and the distribution of

$$\frac{msL}{msE}$$

becomes the usual F-distribution. If  $\delta^2>0$  then the mean and spread of the distribution of

$$\frac{msL}{msE}$$

6

are larger than the usual F-distribution. For equal sample sizes  $r=r_1=r_2=\dots=r_m$ ,

$$\delta^2 = r \sum_i \frac{(\tau_i - \bar{\tau}_*)^2}{\sigma^2}$$

Now let

$$\mu + \tau_2 =$$

$$\mu + \tau_3 = \dots = \mu + \tau_{m-1} = c \text{ and } \mu + \tau_1 = c + \frac{\Delta}{2} \text{ and } \mu + \tau_m = c - \frac{\Delta}{2}$$

for some constant  $c$ , then

$$\delta^2 = r \sum_i \frac{(\tau_i - \bar{\tau}_*)^2}{\sigma^2} = \frac{r\Delta^2}{2\sigma^2} \tag{Eq. 12}$$

The power of the F-test depends on the sample size  $r$  through the distribution of

$$\frac{msL}{msE}$$

which depends on  $\delta^2$ . Since the power of the F-test is the probability of rejecting  $H_0$ , we have

$$\Pi(\Delta) = P\left(\frac{msL}{msE} > F_{m-1, n-1, \alpha}\right) \tag{Eq. 13}$$

The noncentral F can be found from standard tables of F distribution, which are tabulated with power  $\Pi$  given as a function of

$$\Phi = \frac{\delta}{m}$$

for various values of  $v_1=m-1$  and  $v_2=n-m$  and  $\alpha$ . Now,

$$\Phi^2 = \frac{\delta^2}{m} = \frac{r\Delta^2}{2m\sigma^2}$$

(substituting the value of  $\delta^2$  from Eq. 12), so

$$r = \frac{2m\sigma^2\Phi^2}{\Delta^2} \tag{Eq. 14}$$

$r$  is the result of interest: it is the estimated number of biometric samples required to enroll the user to an expected level of accuracy. Practical implications of this result include that more samples should be collected if the number of samples collected so far is less than  $r$ . Also, the form of the equation confirms the intuitive hypotheses that the higher the



7

variation  $\sigma^2$  in the collected samples, the more samples will be required, and that the larger the value of  $\Delta$ , the fewer samples will be needed.

Listing 1 shows a pseudo-code implementation of an algorithm for finding the required sample size given the variance of the already-collected samples and other parameters:

```

Listing 1
10 int
20 NumberOfSamplesRequired( $\Delta$ ,  $\Pi(\Delta)$ ,  $m$ ,  $\alpha$ ) {
30   VarianceUpperBound =  $ssE / \chi^2$ ; /* From Eq. 9 */
40    $v1 = m - 1$ ;
50    $v2 = 1000$ ; /* Initialize  $v_2$  to large value */
60   do {
70      $\Phi = \text{LookupPhiFromTable}(\Pi(\Delta), v1, v2)$ ;
80      $r = \text{round}(2 * m * \text{VarianceUpperBound} * \Phi^2 / \Delta^2) + 1$ ;
90      $v2 = m * (r - 1)$ ;
100  } until (r converges or oscillates);
110  return r;
120 }
    
```

FIG. 2 outlines a practical application of the mathematical principles derived above. First, a plurality of biometric samples is collected (210). Embodiments may collect fingerprints, hand geometry measurements, iris or retina images, or (as considered in greater detail in the examples presented here) keystroke timing measurements. Next, an upper bound for the error variance is computed (220), and an estimated number of samples needed is calculated (230). These operations correspond to the functionality of the pseudo code shown in Listing 1. If the number of samples already collected equals or exceeds the estimated number (240), enrollment is complete. Otherwise, an embodiment may display the estimated number of samples still required to the user (250) via a numeric display, a “thermometer” graph, or some similar representation. A supplemental biometric sample (of the same type) is collected (260) and the computations (220, 230) are repeated over all the collected samples. Since the estimate of samples required to complete enrollment can be re-computed after each additional sample is collected and the enrollment process can be completed after enough statistically-adequate samples are obtained, enrollment may be completed more quickly than a prior-art system that fixes a priori a required sample count and collects that number of samples before analyzing them to prepare a template.

The following paragraphs work a concrete example of an embodiment of the invention that uses keystroke latency timings (key-to-key delays as described above). The user is typing the string “phoha” to enroll. Nine samples were collected (raw data is shown in Table 2, and normalized latencies shown in Table 3) but, as the following calculations will show, only three are needed (so, using an embodiment of the invention, the sample collection could have terminated after collecting the third sample). A computation will also be shown using only the first three latencies (as if the user had only typed “phoh”) to show the effect of a shorter biometric vector.

TABLE 2

Trial ( $1 \leq i \leq 9$ )	Element ( $1 \leq j \leq 5$ )				
	p	h	o	h	a
1		375	171	172	235
2		328	176	172	265
3		375	171	172	235
4		360	171	157	468
5		359	190	172	313

8

TABLE 2-continued

Trial ( $1 \leq i \leq 9$ )	Element ( $1 \leq j \leq 5$ )				
	p	h	o	h	a
6		328	176	156	281
7		344	176	172	312
8		328	192	156	250
9		328	171	156	250

TABLE 3

Trial	Normalized Element $Y_{ij} \leftarrow \frac{Y_{ij} - \bar{Y}_j}{\sigma_{Y_{ej}}}$				
	p	h	o	h	a
1	1.360782	-0.72939	0.842701	-0.75172	
2	-0.94166	-0.14193	0.842701	-0.34086	
3	1.360782	-0.72939	0.842701	-0.75172	
4	0.62596	-0.76611	-0.96309	2.439281	
5	0.576972	1.54153	0.842701	0.316513	
6	-0.94166	-0.14193	-1.08347	-0.12174	
7	-0.15785	-0.14193	0.842701	0.302818	
8	-0.94166	1.838556	-1.08347	-0.54629	
9	-0.94166	-0.72939	-1.08347	-0.54629	

Table 4 shows the results of calculating ssE as described in relation to Eq. 4. No values are shown in the upper and left cells because a minimum of two samples (each with at least two normalized latencies) are required to decide whether more samples are required.

TABLE 4

Trial	ssE after typing:				
	p	ph	pho	phoh	phoha
1					
2			3.742818	3.477706	5.251550509
3		5.49517	5.097502	8.18814591	
4		6.614068	8.107023	14.70847617	
5		7.204777	8.565175	14.95029652	
6		9.195242	12.81303	19.33470292	
7		10.31425	15.96642	23.36955671	

Table 5 gives the corresponding values for msE, which are computed as  $ssE/(m-n)$  (Eq. 5) (blank rows and columns have been omitted); and the corresponding values of Chi-squared ( $\chi^2$ ) (from statistical tables) are given on the right,

TABLE 5

Trial	msE for Second through Fifth Sample				$\chi^2$	
	pho	phoh	phoha			
60	1.871409	1.159235	1.312887627	0.103	0.352	0.711
	1.831723	1.0195	1.16973513	0.711	1.635	2.733
	1.653517	1.158146	1.470847617	1.635	3.325	5.226
	1.440955	0.951686	1.150022809	2.733	5.226	7.962
	1.53254	1.164821	1.208418933	3.94	7.261	10.85
65	1.473464	1.228186	1.229976669	5.226	9.39	13.85

Table 6 gives the upper bound for  $\sigma^2$  at 95% confidence level obtained by

$$\sigma^2 \leq \frac{ssE}{\chi_{n-m,1-\alpha}^2}$$

TABLE 6

$\sigma^2$		
pho	phoh	phoha
18.16902	3.293282	1.846536747
2.576264	0.623548	0.428004072
1.011325	0.348315	0.281448071
0.527243	0.182106	0.144438936
0.38897	0.160422	0.111375017
0.281949	0.130797	0.08880698

With these foundational statistics computed, we proceed to calculate an estimate of the number of samples required to enroll the user successfully. This estimate is first computed after the second sample is collected, and may be re-computed after each additional sample, until the estimate is less than or equal to the total number of samples already in hand. In these calculations, we choose  $\Delta=2\sigma$  (that is, if the variation is more than the  $2\sigma$  of the already-collected samples then we need to take more samples). Since the data is standardized (i.e.  $\sigma=1$ ),  $\Delta=2.0$ .

The estimate is given by Equation 14, reproduced here for convenience:

$$r = \frac{2m\sigma^2\Phi^2}{\Delta^2}$$

$m$  is 4 because there are four latencies measured as the user types “phoha”: p-to-h, h-to-o, o-to-h, and h-to- $\alpha$ .  $\sigma^2$  is 1.846536747 (from Table 6) and  $\Delta^2$  is 4 (because  $\Delta$  was chosen to be 2.0).

Now, statistical tables of the power of the F-test,  $\Pi(\Phi)$  are consulted to find the value for  $\Phi$ . Those tables require values

for  $v_1$ , the number of degrees of freedom, which in this case is simply  $m-1$  or 3;  $\alpha$ ; and  $v_2$ . We look for the desired power of the test (its discriminative power) and read off the corresponding value for  $\Phi$  at the column head. As described in the algorithm of Listing 1, we begin with a large value for  $v_2$  and successively approximate  $r$  by setting  $v_2$  for the next iteration to  $m(r_{previous}-1)$  until  $r$  converges to a stable value or oscillates between two values (in the latter case, we select the smaller of the two values). Table 7 shows the power of the F-test for  $v_1=3$  and  $\alpha=0.01$ :

TABLE 7

$v_2$	$\Phi$										
	1.67	2.00	2.33	2.67	3.00	3.33	3.67	4.00	4.33	4.67	5.00
5	0.16	0.25	0.36	0.48	0.60	0.71	0.80	0.87	0.92	0.95	0.98
6	0.20	0.31	0.44	0.58	0.71	0.81	0.89	0.94	0.97	0.99	0.99
7	0.23	0.36	0.52	0.66	0.79	0.88	0.94	0.97	0.99	1.00	1.00
8	0.26	0.41	0.57	0.72	0.84	0.92	0.96	0.99	1.00	1.00	1.00
9	0.29	0.45	0.62	0.77	0.88	0.95	0.98	0.99	1.00	1.00	1.00
10	0.31	0.48	0.66	0.81	0.91	0.96	0.99	1.00	1.00	1.00	1.00
12	0.35	0.54	0.72	0.86	0.94	0.98	0.99	1.00	1.00	1.00	1.00
15	0.39	0.59	0.77	0.90	0.96	0.99	1.00	1.00	1.00	1.00	1.00
20	0.44	0.65	0.83	0.93	0.98	1.00	1.00	1.00	1.00	1.00	1.00
30	0.49	0.71	0.87	0.96	0.99	1.00	1.00	1.00	1.00	1.00	1.00
60	0.55	0.77	0.91	0.97	0.99	1.00	1.00	1.00	1.00	1.00	1.00
1000	0.60	0.82	0.94	<b>0.99</b>	1.00	1.00	1.00	1.00	1.00	1.00	1.00

For the first iteration, we calculate

$$r = \frac{2m\sigma^2\Phi^2}{\Delta^2} = \frac{2 \times 4 \times 1.85}{4} \Phi^2 = 3.7\Phi^2$$

Then, looking up the value for  $\Phi$  that corresponds to our initial choice of  $v_2=1000$ , power of the Test=0.99 (highlighted triple border), we find  $\Phi=2.67$  (bold). Substituting, we obtain

$$r = 3.7 \times (2.67)^2 = 26.38$$

or, rounding to the nearest integer larger (because it is not possible to take a fraction of a biometric sample), 27.

For the next iteration, we set

$$v_2 = m(r-1) = 4(26) = 104$$

then, interpolating from the values in Table 7 since there is no row for  $v_2=104$ , we might estimate a value for  $\Phi$  of 2.95. This gives a second iteration result of  $r=32.20$ , and  $v_2$  of 132. Estimating  $\Phi=2.98$  gives  $r=32.85$ , and  $v_2$  of 132. Since  $r$  has converged at 33, we estimate that—based on the two samples collected—a total of 33 samples will be required.

After collecting the next sample, however, we find that the variance  $\sigma^2$  is 0.428004072 (Table 6). By repeating the itera-

11

tive algorithm of Listing 1, we find that our estimate of samples required has dropped significantly, to only eight. The values of  $v_2$ ,  $\Phi$  and  $r$  that occur during the processing of the third sample are shown in Table 8:

TABLE 8

Iteration	$v_2$	$\Phi$	$r$	Notes
1	1000	2.67	6.10	
2	24	3.10	8.22	
3	32	3.00	7.70	
4	28	3.00	7.70	
5	28	3.00	7.70	$r$ has converged at 7.70 (rounded to 8)

As the sample collection progresses,  $\sigma^2$  keeps shrinking because the typist is quite consistent, and after the fifth sample is obtained, the method indicates that “enough” samples have been collected. Table 9 shows the iterations performed for the fourth and fifth samples:

TABLE 9

Sample	$\sigma^2$	Iteration	$v_2$	$\Phi$	$r$
4	0.281448071	1	1000	2.67	4.01
		2	16	3.33	6.24
		3	24	3.10	5.41
		4	20	3.17	5.66
		5	20	3.17	5.66
5	0.144438936	1	1000	2.67	2.06
		2	8	4.00	4.62
		3	16	3.33	3.20
		4	12	3.67	3.89
		5	12	3.67	3.89

Repeating these calculations for the  $\sigma^2$  values in the second column of Table 6 (i.e. the values that apply if the shorter string “phoh” was being typed,  $m=3$ ,  $v_1=2$ ) we see that the estimates of samples required goes from 47 to 11 to 6 to 5, and the method indicates that “enough” samples have been collected after the fifth sample. Table 10, which follows the layout of Table 9, shows how the estimated number of samples required changes after each sample is collected. Note that the value for  $\Phi$  must be looked up in a different table (i.e. not Table 7) because  $m$  and  $v_1$  are different in this example. The corresponding table for the power of the F-test for  $v_1=2$ ,  $\alpha=0.01$  is not reproduced here, but may be found in many statistics reference books.

TABLE 10

Sample	$\sigma^2$	Iteration	$v_2$	$\Phi$	$r$
2	3.293282	1	1000	3.00	44.46
		2	132	3.10	47.47
		3	141	3.05	45.95
		4	135	3.07	46.56
		5	138	3.08	46.86
		6	138	3.08	46.86
3	0.623548	1	1000	3.00	8.41
		2	24	3.25	9.88
		3	27	3.31	10.25
		4	30	3.33	10.37
		5	30	3.33	10.37
4	0.348315	1	1000	3.00	4.70
		2	12	3.67	7.04
		3	21	3.33	5.79
		4	15	3.67	7.04
		5	21	3.33	5.79
5	0.182106	1	1000	3.00	2.46
		2	6	5.00	6.83
		3	18	3.34	3.05
		4	9	4.00	4.37

12

TABLE 10-continued

Sample	$\sigma^2$	Iteration	$v_2$	$\Phi$	$r$
5		5	12	3.67	3.68
		6	9	4.00	4.37

Note that in processing the fourth and fifth samples above, the iterative algorithm began oscillating between two values. The smaller of the two was selected in each case. Thus, after the fourth sample, 5.79 samples (rounded to six samples) were estimated to be required, while after the fifth sample, only 4.37 (5) samples were estimated to be required. Since five samples had already been collected, the enrollment process could have stopped.

This method uses the variability in a user’s keystroke patterns with desired FAR and FRR to arrive at sampling decisions. In an experiment with 43 users, this method resulted in sample size of six for 75% of the users and sample sizes varying from three to nine for rest of the users. In this user population, a prior-art system would require at least nine samples from each user to be certain of successfully enrolling every user. However, by evaluating samples collected on the fly according to an embodiment of this invention, the majority of users could have enrolled with fewer samples.

The methods described above relate the number of biometric samples needed to achieve desired FRR and FAR ratios with the length of the number of characters needed in a password for keystroke authentication system. An algorithm based on this method can give an indication to give a user feedback on when he may stop giving biometric samples for authentication.

An embodiment of the invention can be implemented on a data processing system like the one shown in block-diagram form in FIG. 3. This system includes a programmable processor (a “central processing unit” or “CPU”) 305, memory 310, and mass storage device 315. A network interface 320 permits the system to communicate with other systems over a distributed data network. Other interfaces 325 (which may be built into the system or added as plug-in cards, as shown here) permit the system to communicate with various peripherals to collect biometric data. This system has an extensive complement of peripherals: a keyboard 330, mouse 335, fingerprint scanner 340, microphone 345, hand geometry sensor 350 and camera 355. Of course, systems with only one or two peripherals can also implement an embodiment of the invention.

A display 360 may be provided to present instructions, messages and other information to a user (not shown). Software instructions stored in memory 310 and executed by CPU 305, dedicated hardware circuitry, or a combination of hardware and software may be used to implement functions such as control logic 365 to coordinate the activities of other subsystems and peripherals; biometric data collector 370 to operate a peripheral and take biometric measurements; statistics module 375 to analyze the collected biometric measurements according to the methods described earlier; and database 380 to store biometric templates constructed after user enrollment. Once a user has been enrolled, access control logic 385 may compare biometric data collected from a prospective user and compare it with a template stored in database 380 to decide whether the prospective user should be granted access to a resource controlled by the system (not shown).

An embodiment of the invention may be a machine-readable medium having stored thereon instructions which cause a programmable processor to perform operations as described above. In other embodiments, the operations might be performed by specific hardware components that contain hard-

wired logic. Those operations might alternatively be performed by any combination of programmed computer components and custom hardware components.

A machine-readable medium may include any mechanism for storing or transmitting information in a form readable by a machine (e.g., a computer), including but not limited to Compact Disc Read-Only Memory (CD-ROM), Read-Only Memory (ROM), Random Access Memory (RAM), and Erasable Programmable Read-Only Memory (EPROM).

The applications of the present invention have been described largely by reference to specific examples and in terms of particular allocations of functionality to certain hardware and/or software components. However, those of skill in the art will recognize that evaluation of biometric samples for their discriminative power can also be achieved by software and hardware that distribute the functions of embodiments of this invention differently than herein described. Such variations and implementations are understood to be captured according to the following claims.

I claim:

**1.** A method comprising:

- a. collecting a plurality of biometric measurements of a user;
- b. computing an estimated count of biometric measurements required to achieve target values for false rejection rate (FRR) or false acceptance rate (FAR) based on the plurality of biometric measurements;
- c. while a number of the plurality of biometric measurements is less than the estimated count of biometric measurements, collecting a supplemental biometric measurement of the user and computing a new estimated count of measurements required to achieve target values for false rejection rate (FRR) or false acceptance rate (FAR) based on the plurality of biometric measurements and the supplemental biometric measurement; and
- d. storing a biometric template constructed from the plurality of biometric measurements and any supplemental biometric measurements.

**2.** The method of claim **1**, further comprising displaying the estimated count of supplemental biometric measurements to the user.

**3.** The method of claim **1**, wherein each of the plurality of biometric measurements includes a plurality of elements or a plurality of scalar quantities.

**4.** The method of claim **1** wherein the plurality of biometric measurements and the supplemental biometric measurement are one of fingerprint images, hand geometry measurements, voice recordings, iris patterns, or retina images.

**5.** The method of claim **1**, further comprising:

- a. collecting a candidate biometric measurement of a candidate;
- b. comparing the candidate biometric measurement to the biometric template; and
- c. granting access to a resource to the candidate if the candidate biometric measurement matches the biometric template.

**6.** The method of claim **1** wherein calculating the estimated count of biometric measurements required to achieve target values for false rejection rate (FRR) or false acceptance rate (FAR) includes calculating an estimated count of biometric measurements required to achieve the target values for a plurality of number of elements that the biometric measurements are related to.

**7.** The method of claim **1** wherein the estimated count of biometric measurements required is a first estimated count of

biometric measurements required for a first number of elements that the biometric measurements are related to; and further comprising:

- a. calculating a second estimated count of biometric measurements required to achieve target values for false rejection rate (FRR) or false acceptance rate (FAR) for a plurality of a second, different number of elements that the biometric measurements are related to; and
- b. while the number of the plurality of biometric measurements is less than the second estimated count of biometric measurements, collecting a second supplemental biometric measurement of the user and computing a new second estimated count of measurements required to achieve target values for false rejection rate (FRR) or false acceptance rate (FAR) based on the plurality of biometric measurements and the second supplemental biometric measurement.

**8.** The method of claim **1** wherein the estimated count of biometric measurements required is a first estimated count of biometric measurements required for a number of first elements that the biometric measurements are related to; and further comprising:

- a. calculating a second estimated count of biometric measurements required to achieve target values for false rejection rate (FRR) or false acceptance rate (FAR) for a number of different second elements that the biometric measurements are related to; and
- b. while the number of the plurality of biometric measurements is less than the second estimated count of biometric measurements, collecting a second supplemental biometric measurement of the user and computing a new second estimated count of measurements required to achieve target values for false rejection rate (FRR) or false acceptance rate (FAR) based on the plurality of biometric measurements and the second supplemental biometric measurement.

**9.** The method of claim **1** wherein the user is a first user; and further comprising:

- a. collecting a second plurality of biometric measurements of a second user;
- b. calculating a second estimated count of biometric measurements required to achieve target values for false rejection rate (FRR) or false acceptance rate (FAR) based on the second plurality of biometric measurements;
- c. while the number of the second plurality of biometric measurements is less than the second estimated count of biometric measurements, collecting a second supplemental biometric measurement of the second user and computing a new second estimated count of measurements required to achieve target values for false rejection rate (FRR) or false acceptance rate (FAR) based on the second plurality of biometric measurements and the second supplemental biometric measurement.

**10.** The method of claim **1** further comprising:

- a. computing a different estimated count of measurements required to achieve a second false rejection rate (FRR) or second false acceptance rate (FAR), for a plurality of a different number of elements included in the plurality of biometric measurements; and
- b. while a number of the plurality of measurements is less than the estimated count of measurements for all the numbers of elements, collecting a second supplemental measurement and computing a new estimated count of measurements required to achieve the second false

15

rejection rate (FRR) or second false acceptance rate (FAR) based on the second supplemental biometric measurement.

11. The method of claim 1, wherein each biometric measurement is one biometric measurement comprising a number of biometric measurements.

12. A method comprising:

a. collecting a plurality of biometric measurements of a user;

b. computing an estimated count of biometric measurements required to enroll a user to an expected level of accuracy based on the plurality of biometric measurements;

c. while the number of the plurality of biometric measurements is less than the estimated count of biometric measurements, collecting a supplemental biometric measurement of the user and computing a new estimated count of measurements required to enroll the user based on the plurality of biometric measurements and the supplemental biometric measurement.

13. The method of claim 12, wherein each of the plurality of biometric measurements includes a plurality of elements or a plurality of scalar quantities; and further comprising displaying the estimated count of supplemental biometric measurements to the user.

14. The method of claim 12, wherein the plurality of biometric measurements and the supplemental biometric measurement are one of fingerprint images, hand geometry measurements, voice recordings, iris patterns, or retina images.

15. The method of claim 12, further comprising:

collecting a candidate biometric measurement of a candidate;

comparing the candidate biometric measurement to a biometric template; and

granting access to a resource to the candidate if the candidate biometric measurement matches the biometric template.

16. A non-transitory computer-readable medium containing instructions to cause a programmable processor to perform operations comprising:

a. collecting a plurality of biometric measurements of a user;

b. computing an estimated count of biometric measurements required to achieve target values for false rejection rate (FRR) or false acceptance rate (FAR) based on the plurality of biometric measurements;

c. while the number of the plurality of biometric measurements is less than the estimated count of biometric measurements, collecting a supplemental biometric measurement of the user and computing a new estimated count of measurements required to achieve target values for false rejection rate (FRR) or false acceptance rate

16

(FAR) based on the plurality of biometric measurements and the supplemental biometric measurement; and

d. storing a biometric template constructed from the plurality of biometric measurements and any supplemental biometric measurements.

17. The computer-readable medium of claim 16, containing additional instructions to cause the programmable processor to perform operations comprising displaying the estimated count of supplemental biometric measurements to the user; and wherein each of the plurality of biometric measurements includes a plurality of elements or a plurality of scalar quantities.

18. The computer-readable medium of claim 16, wherein the plurality of biometric measurements and the supplemental biometric measurement are one of fingerprint images, hand geometry measurements, voice recordings, iris patterns, or retina images.

19. A system comprising:

a. an input sensor to measure a characteristic of a user;

b. biometric sample collection logic to collect a plurality of biometric measurements of the user from the input device;

c. statistical analysis logic to compute an estimated count of biometric measurements required to achieve target values for false rejection rate (FRR) or false acceptance rate (FAR) based on the plurality of biometric measurements;

d. control logic to while the number of the plurality of biometric measurements is less than the estimated count of biometric measurements, collect a supplemental biometric measurement of the user and computing a new estimated count of measurements required to achieve target values for false rejection rate (FRR) or false acceptance rate (FAR) based on the plurality of biometric measurements and the supplemental biometric measurement; and

e. database logic to store a biometric template constructed from the plurality of biometric measurements and any supplemental biometric measurements.

20. The system of claim 19, further comprising a display to display the estimated count of supplemental biometric measurements to the user; and wherein each of the plurality of biometric measurements includes a plurality of elements or a plurality of scalar quantities.

21. The system of claim 19 wherein the plurality of biometric measurements and the supplemental biometric measurement are one of fingerprint images, hand geometry measurements, voice recordings, iris patterns, or retina images.

22. The system of claim 19, further comprising a memory storing logic, the logic executable by a processor of the system.

\* \* \* \* \*

UNITED STATES PATENT AND TRADEMARK OFFICE  
**CERTIFICATE OF CORRECTION**

PATENT NO. : 9,064,159 B2  
APPLICATION NO. : 14/069980  
DATED : June 23, 2015  
INVENTOR(S) : Vir V. Phoha

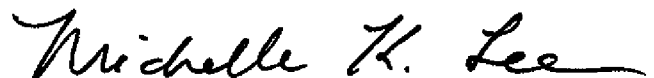
Page 1 of 1

It is certified that error appears in the above-identified patent and that said Letters Patent is hereby corrected as shown below:

In the Claims,

Column 16, Claim 19, line 31, please delete “computing” and insert -- compute --.

Signed and Sealed this  
Seventeenth Day of November, 2015



Michelle K. Lee  
*Director of the United States Patent and Trademark Office*