

LOUISIANA TECH UNIVERSITY

**Daniel D. Reneau, PhD
President**

**UNIVERSITY CATALOG
2008-2009**

<http://www.latech.edu>

Louisiana Tech University Practices
A Policy of Equal Opportunity

Volume MMVIII

Louisiana Tech University is a member of the University of Louisiana System.

Published by the University Catalog Committee and the University Registrar's Office of Louisiana Tech University, 207 Keeny Circle, Ruston, Louisiana, 71272. This catalog is neither a contract, nor an offer to contract. Any and all aspects of the education programs described herein, including the identity of the programs, may be subject to change. Changes could include rules or policies and be applied to all matriculated students.

The service marks of Louisiana Tech University are registered in the U.S. Patent and Trademark Office: *T-and-state logo; Louisiana Tech seal; Louisiana Tech University; Louisiana Tech; Lady Techsters*[™]

Table of Contents

PART I - GENERAL UNIVERSITY OVERVIEW

Preface

Table of Contents	ii-iii
Board of Regents and Board of Supervisors.....	iv
Louisiana Tech Map.....	v
Louisiana Tech Organizational Chart.....	vi
Accreditation	vii
Undergraduate Degree Tables	viii-x
Graduate Degree Tables	xi-xiii
University Academic Calendar.....	xiv-xv

Chapter 1 - University Overview

History	1
Mission Statements	
Board of Regents.....	1
Louisiana Tech University	1
Intercollegiate Athletics Statement of Purpose	2
Strategic Plan	2
Equal Opportunity Policies	
Admissions.....	2
Disability Services	3
Employment.....	3
Family Educational Rights and Privacy Act (FERPA).....	3
Student Representation.....	3
Emergency Announcements through the Media.....	3

Chapter 2 - Undergraduate Admissions

Louisiana Tech Immunization Policy.....	4
Admission Requirements and Procedures	
Freshman Admission.....	4
Transfer Admission.....	5
Readmission Students	5
International Admission	5
Visiting and Special Admission	6
Inter-Institutional Cooperative Program (ICP).....	6
Early and Concurrent Admission	6
Summer Enrichment Program for High School Students.....	6
Summer Scholars Program.....	6
Summer Orientation Program.....	6
Louisiana’s Residency Regulations.....	7
Bulldog Out-of-State Fee Scholarship.....	7
Academic Renewal.....	7
Placement Requirements for English, Mathematics, and University Seminar.....	8
Developmental Education Program.....	9
University Seminar.....	9
The Honors Program	9

Chapter 3 - Academic Policies

Student Classification.....	10
Semester Hour/Quarter Calendar.....	10
Registration and Advisement	10
Class Attendance Policy.....	11
Dropping a Course/Resignation from the University	11
Repeating a Course/Repeat Policy	11
Auditing a Course.....	11
Veteran’s Certification	12
Credit by Examination.....	12
Bulldog Online Student System (BOSS).....	13
Campus Wide Identification (CWID).....	13
TECH E-mail	13

Chapter 4 - Academic Standards: Status, Matriculation, Grading, and Graduation

Academic Status.....	14
General Education Requirements (GER).....	14
International Education Requirements (IER)	15

Degree Programs	15
Curriculum Matriculation	15
Louisiana Statewide Articulation	15
Grading System	16
Calculating Grade Point Average (GPA).....	16
Outstanding Academic Achievement	17
Grade Reporting	17
Final Grade Appeals Procedure	17
Academic Misconduct	17
Academic Transcripts.....	17
Graduation Requirements.....	18
Earning a Double Major.....	18
Earning a Second Baccalaureate Degree	18
Graduation with Honors	19
Academic Honor Code	19
Chapter 5 - Student Affairs	
Off-Campus Housing Application Requirements.....	22
International Students and Faculty	24
Student Health Center	24
Student Accident and Health Insurance.....	24
Counseling Services	24
Career Center	24
Co-Curricular Programs	25
Vehicle Registration	25
Student Conduct.....	25
University Police Department	25
Student Activities and Organizations	25
Chapter 6 - Student Financial Aid	
Grants, Loans, and Assistantships	26
Satisfactory Academic Progress for TECH Financial Aid Eligibility.....	27
Return of Title IV Funds Policy	27
Tuition Opportunity Program for Students (TOPS).....	28
Veteran’s, Vocational Rehabilitation, Academic, and Out-of-State Scholarships	28
Chapter - 7 Special Programs and Facilities	29-36
PART II - UNDERGRADUATE ACADEMIC PROGRAMS	
Chapter 8 - Division of Basic and Career Studies.....	37
Chapter 9 - Department of Air Force Aerospace Studies.....	38-39
Chapter 10 - The College of Applied and Natural Sciences	40-56
Chapter 11 - The College of Business	57-65
Chapter 12 - The College of Education	66-79
Chapter 13 - The College of Engineering and Science	80-93
Chapter 14 - The College of Liberal Arts	94-110
PART III - GRADUATE ACADEMIC PROGRAMS	
Chapter 15 - The Graduate School.....	112-123
Chapter 16 - Interdisciplinary Graduate Programs	124-125
Chapter 17 - Graduate Programs: The College of Applied and Natural Sciences.....	126-128
Chapter 18 - Graduate Programs: The College of Business	129-132
Chapter 19 - Graduate Programs: The College of Education.....	133-139
Chapter 20 - Graduate Programs: The College of Engineering and Science.....	140-143
Chapter 21 - Graduate Programs: The College of Liberal Arts.....	144-150
PART IV - COURSE DESCRIPTIONS	151-214
PART V - COUNCILS, COMMITTEES, COMMISSIONS	215-218
PART VI - UNIVERSITY FACULTY AND ADMINISTRATORS	219-230
PART VII – INDEX	231-236

Louisiana Board of Regents

Scott I. Brame
Alexandria, Louisiana

Robert J. Bruno
Covington, Louisiana

Richard E. D'Aquin
Lafayette, Louisiana

Maurice C. Durbin
Denham Springs, Louisiana

Donna G. Klein
New Orleans, Louisiana

Ingrid T. Labat
New Orleans, Louisiana

Robert W. Levy (*Secretary*)
Ruston, Louisiana

W. Clinton Rasberry, Jr.
Shreveport, Louisiana

Mary Ellen Roy (*Member-at-Large*)
New Orleans, Louisiana

W. Clifford Smith
Houma, Louisiana

Victor T. Stelly
Lake Charles, Louisiana

Harold M. Stokes
Metairie, Louisiana

Pat A. Strong (*Chairman*)
Franklin, Louisiana

Artis L. Terrell, Jr. (*Vice Chairman*)
Shreveport, Louisiana

Roland M. Toups
Baton Rouge, Louisiana

James L. Klock (*Student Member*)
Alexandria, Louisiana

Sally Clausen
Commissioner of Higher Education

University of Louisiana System Board of Supervisors

Paul G. Aucoin
Thibodaux, Louisiana

Elsie P. Burkhalter (*Chair*)
Slidell, Louisiana

Victor Bussie
Baton Rouge, Louisiana

Andre G. Coudrain
Hammond, Louisiana

Paul Dickson
Shreveport, Louisiana

Mildred G. Gallot
Grambling, Louisiana

Robert T. Hale
Lake Charles, Louisiana

Jeffrey S. Jenkins
Baton Rouge, Louisiana

Renee A. Lapeyrolerie
New Orleans, Louisiana

Jimmy D. Long, Sr.
Natchitoches, Louisiana

Russell L. Mosely
Baton Rouge, Louisiana

D. Wayne Parker (*Parliamentarian*)
Choudrant, Louisiana

Connie Rougeou
New Iberia, Louisiana

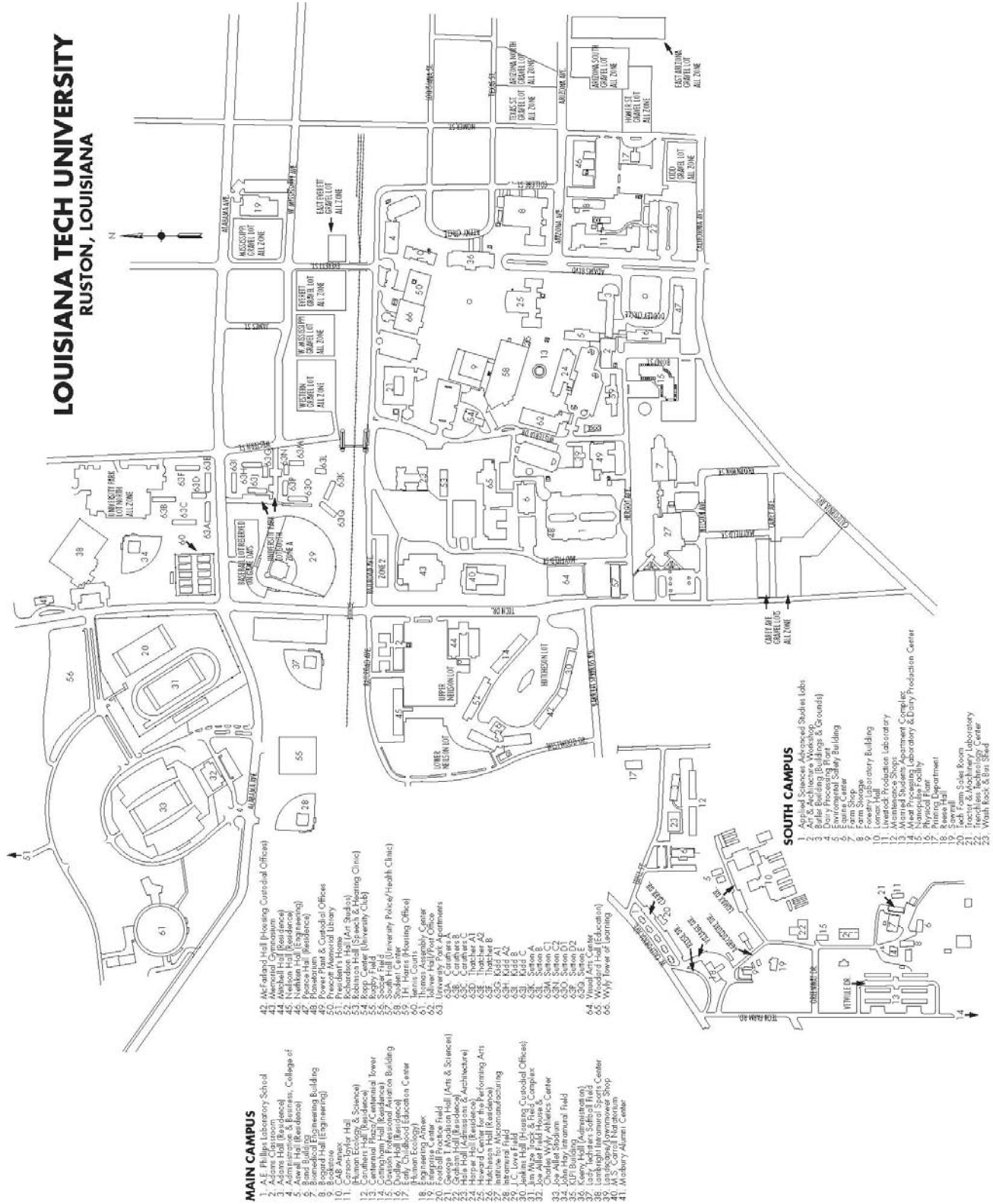
Winfred F. Sibille (*Vice Chair*)
Sunset, Louisiana

Eunice W. Smith
Baton Rouge, Louisiana

Olinda Ricard (*Student Member*)
Thibodaux, Louisiana

System President

LOUISIANA TECH UNIVERSITY RUSTON, LOUISIANA



MAIN CAMPUS

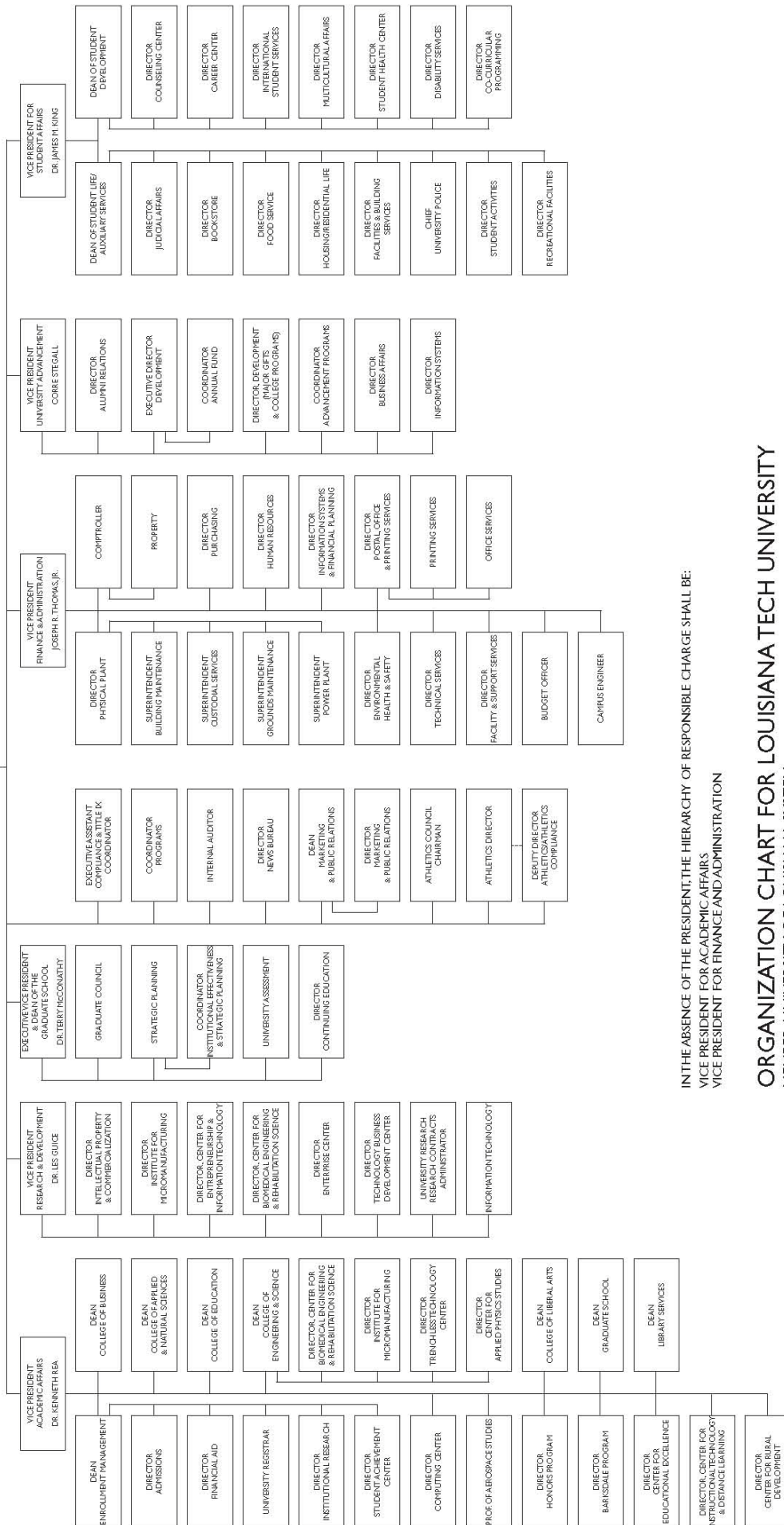
1. A. E. Phillips Laboratory School
2. Adams Hall (Residence)
3. Administration & Business, College of
4. Administration & Business, College of
5. Administration & Business, College of
6. Administration & Business, College of
7. Administration & Business, College of
8. Administration & Business, College of
9. Biological Engineering Building
10. Bogard Hall (Engineering)
11. Cannon-Loyer Hall (Science)
12. Cannon-Loyer Hall (Science)
13. Central Hall (Residence)
14. Central Hall (Residence)
15. Central Hall (Residence)
16. Dudley Hall (Residence)
17. Education Center
18. Education Center
19. Engineering Annex
20. Football Practice Field
21. Georgia I. Madison Hall (Arts & Sciences)
22. Georgia I. Madison Hall (Arts & Sciences)
23. Georgia I. Madison Hall (Arts & Sciences)
24. Georgia I. Madison Hall (Arts & Sciences)
25. Georgia I. Madison Hall (Arts & Sciences)
26. Georgia I. Madison Hall (Arts & Sciences)
27. Georgia I. Madison Hall (Arts & Sciences)
28. Georgia I. Madison Hall (Arts & Sciences)
29. Georgia I. Madison Hall (Arts & Sciences)
30. Jackson Hall (Housing Quonset Office)
31. Jim W. W. Frick & Fred Complex
32. Joe Allen Stadium
33. Joe Allen Stadium
34. Joe Allen Stadium
35. Joe Allen Stadium
36. Keady Hall (Administration)
37. Keady Hall (Administration)
38. Keady Hall (Administration)
39. Keady Hall (Administration)
40. M.S. Control Building
41. Machinery Admin. Center
42. McFarland Hall (Housing Quonset Office)
43. McFarland Hall (Housing Quonset Office)
44. McFarland Hall (Housing Quonset Office)
45. McFarland Hall (Housing Quonset Office)
46. McFarland Hall (Housing Quonset Office)
47. McFarland Hall (Housing Quonset Office)
48. McFarland Hall (Housing Quonset Office)
49. McFarland Hall (Housing Quonset Office)
50. McFarland Hall (Housing Quonset Office)
51. McFarland Hall (Housing Quonset Office)
52. McFarland Hall (Housing Quonset Office)
53. McFarland Hall (Housing Quonset Office)
54. McFarland Hall (Housing Quonset Office)
55. McFarland Hall (Housing Quonset Office)
56. McFarland Hall (Housing Quonset Office)
57. McFarland Hall (Housing Quonset Office)
58. McFarland Hall (Housing Quonset Office)
59. McFarland Hall (Housing Quonset Office)
60. McFarland Hall (Housing Quonset Office)
61. McFarland Hall (Housing Quonset Office)
62. McFarland Hall (Housing Quonset Office)
63. McFarland Hall (Housing Quonset Office)
64. McFarland Hall (Housing Quonset Office)
65. McFarland Hall (Housing Quonset Office)
66. McFarland Hall (Housing Quonset Office)

SOUTH CAMPUS

1. Applied Sciences Advanced Studies Labs
2. Applied Sciences Advanced Studies Labs
3. Applied Sciences Advanced Studies Labs
4. Applied Sciences Advanced Studies Labs
5. Applied Sciences Advanced Studies Labs
6. Applied Sciences Advanced Studies Labs
7. Applied Sciences Advanced Studies Labs
8. Applied Sciences Advanced Studies Labs
9. Applied Sciences Advanced Studies Labs
10. Applied Sciences Advanced Studies Labs
11. Applied Sciences Advanced Studies Labs
12. Applied Sciences Advanced Studies Labs
13. Applied Sciences Advanced Studies Labs
14. Applied Sciences Advanced Studies Labs
15. Applied Sciences Advanced Studies Labs
16. Applied Sciences Advanced Studies Labs
17. Applied Sciences Advanced Studies Labs
18. Applied Sciences Advanced Studies Labs
19. Applied Sciences Advanced Studies Labs
20. Applied Sciences Advanced Studies Labs
21. Applied Sciences Advanced Studies Labs
22. Applied Sciences Advanced Studies Labs
23. Applied Sciences Advanced Studies Labs
24. Applied Sciences Advanced Studies Labs
25. Applied Sciences Advanced Studies Labs

**UNIVERSITY OF LOUISIANA SYSTEM
BOARD OF SUPERVISORS**

**PRESIDENT
DR. DANIEL D. RENEAU**



IN THE ABSENCE OF THE PRESIDENT, THE HIERARCHY OF RESPONSIBLE CHARGE SHALL BE:
 VICE PRESIDENT FOR ACADEMIC AFFAIRS
 VICE PRESIDENT FOR FINANCE AND ADMINISTRATION

**ORGANIZATION CHART FOR LOUISIANA TECH UNIVERSITY
MEMBER, UNIVERSITY OF LOUISIANA SYSTEM**

REVISED MARCH 26, 2008

Accreditation

Louisiana Tech University is accredited by the Commission on Colleges of the Southern Association of Colleges and Schools to award associate, baccalaureate, master's, and doctoral degrees.

Commission on Colleges of the Southern Association of Colleges and Schools
1866 Southern Lane
Decatur, Georgia 30033-4097
Phone: (404) 679-4501

Member

American Association of Colleges for Teacher Education
American Association of Collegiate Registrars and Admissions Officers (AACRAO)
American Association of State Colleges and Universities
American Council on Education (ACE)
Association for University Business and Economics Research
Conference of Southern Graduate Schools
Council on International Education Exchange
Institute of International Education
Louisiana Campus Compact
National Association of State Universities and Land-Grant Colleges
National Association of Student Financial Aid Administrators (NASFAA)
National Student Exchange
Southeastern Universities Research Association, Inc.
Southern Association of Collegiate Registrars and Admissions Officers (SACRAO)

Affiliation

National Commission on Accrediting
National Council of University Research Administrators

Accreditation in Specific Areas

Accreditation Board of Engineering and Technology (ABET)
Computing Accreditation Commission of ABET
Engineering Accreditation Commission of ABET
Technology Accreditation Commission of ABET
American Chemical Society
American Psychological Association
AACSB International - The Association to Advance Collegiate Schools of Business
Commission on Accreditation for Health Informatics and Information Management Education (CAHIIM)
Commission on Accreditation for Dietetics Education of The American Dietetic Association
Council on Academic Accreditation in Audiology and Speech-Language Pathology (CAA) of the
American Speech-Language-Hearing Association
The Council for Accreditation of the American Association of Family and Consumer Sciences
Council on Aviation Accreditation
Council for Interior Design Accreditation (CIDA)
National Academy of Early Childhood Programs Division of the National Association for the Education of Young Children (NAEYC)
National Architectural Accrediting Board (NAAB)
National Association of Schools of Art and Design (NASAD)
National Association of Schools of Music (NASM)
National Council for the Accreditation of Teacher Education
National League for Nursing
Society of American Foresters

LOUISIANA TECH UNIVERSITY

UNDERGRADUATE DEGREES

DEPARTMENT (UNIT)	MAJOR	CONCENTRATION WITHIN THE MAJOR	DEGREE
College of Applied and Natural Sciences			
Interdisciplinary	Environmental Science		Bachelor of Science
Agricultural Sciences	Agricultural Business	Business Crop Science & Management Landscape & Turf Management	Bachelor of Science
	Animal Science	Dairy Equine Science General Animal Science Livestock Production Pre-Veterinary Medicine	Bachelor of Science
Biological Sciences, School of	Biology	Biological Sciences Applied Biology Pre-Dentistry* Pre-Medicine* Pre-Physical Therapy*	Bachelor of Science
	Environmental Science – Interdisciplinary		Bachelor of Science
	Medical Technology		Bachelor of Science
Forestry, School of	Forestry		Bachelor of Science in Forestry
	Geographic Information Science – Interdisciplinary	Natural Resources Social Sciences	Bachelor of Science
	Wildlife Conservation		Bachelor of Science
Health Information Management	Health Information Administration		Bachelor of Science
	Health Information Technology		Associate of Science
Human Ecology, School of	Family and Child Studies	Applied Child Development Child Life Family Science	Bachelor of Science
	Family and Consumer Sciences Education – Grades 6-12		Bachelor of Science
	Merchandising and Consumer Studies	Consumer Studies Merchandising	Bachelor of Science
	Nutrition and Dietetics		Bachelor of Science
Nursing, Division of	Nursing (RN Program)		Associate of Science in Nursing
College of Business			
Accountancy, School of	Accounting		Bachelor of Science
Economics and Finance	Business Administration		Bachelor of Science
	Business Economics		Bachelor of Science
	Finance		Bachelor of Science
Management and Information Systems	Computer Information Systems		Bachelor of Science
	Management/Business Management and Entrepreneurship		Bachelor of Science
	Management/Human Resources Management		Bachelor of Science
Marketing and Analysis	Marketing		Bachelor of Science

DEPARTMENT (UNIT)	MAJOR	CONCENTRATION WITHIN THE MAJOR	DEGREE
College of Education			
Curriculum, Instruction, and Leadership	Early/Childhood Education – Grades PK-3		Bachelor of Science
	Elementary Education - Grades 1-5		Bachelor of Science
	Elementary Education Grades 1-5 and Special Education M/M – Grades 1-12		Bachelor of Science
	Middle School Education Math and Science - Grades 4-8		Bachelor of Science
	Special Education - Early Interventions		Bachelor of Science
	Special Education - Mild/Moderate Elementary		Bachelor of Science
	Special Education - Mild/Moderate Secondary		Bachelor of Science
	Special Education - Severe/Profound		Bachelor of Science
	Agriculture Education - Grades 6-12		Bachelor of Science
	Art Education – Grades K-12		Bachelor of Arts
	Biology Education - Grades 6-12		Bachelor of Science
	Business Education - Grades 6-12		Bachelor of Science
	Chemistry Education - Grades 6-12		Bachelor of Science
	Earth Science Education - Grades 6-12		Bachelor of Science
	Educational Services		Bachelor of Arts
	English Education - Grades 6-12		Bachelor of Arts
	French Education - Grades 6-12		Bachelor of Arts
	Mathematics Education - Grades 6-12		Bachelor of Science
	Music Education - Instrumental		Bachelor of Music Education
	Music Education - Vocal		Bachelor of Music Education
	Physics Education - Grades 6-12		Bachelor of Science
	Social Studies Education - Grades 6-12		Bachelor of Arts
	Speech Education—Grades 6-12		Bachelor of Science
Speech, Language, & Hearing Therapy		Bachelor of Science	
Health and Exercise Sciences	Health and Physical Education - Grades K-12		Bachelor of Science
	Kinesiology and Health Promotion	Clinical* Health Fitness	Bachelor of Science
Psychology and Behavioral Sciences	Psychology		Bachelor of Arts
College of Engineering and Science			
Interdisciplinary	Nanosystems Engineering	Biomedical Engineering Chemical Engineering Electrical Engineering Mechanical Engineering Microsystems Engineering	Bachelor of Science
Biomedical Engineering	Biomedical Engineering	Chemical Engineering Computer Information Electrical Engineering Mechanical Engineering Pre-Medical*	Bachelor of Science
Chemical Engineering	Chemical Engineering		Bachelor of Science
Chemistry	Chemistry	Pre-Dentistry* Pre-Medicine*	Bachelor of Science
Civil Engineering	Civil Engineering		Bachelor of Science
	Construction Engineering Technology		Bachelor of Science
Computer Science	Computer Science		Bachelor of Science
Electrical Engineering	Electrical Engineering		Bachelor of Science
	Electrical Engineering Technology		Bachelor of Science
Industrial Engineering	Industrial Engineering		Bachelor of Science
Mathematics and Statistics	Mathematics		Bachelor of Science
Mechanical Engineering	Mechanical Engineering		Bachelor of Science

DEPARTMENT (UNIT)	MAJOR	CONCENTRATION WITHIN THE MAJOR	DEGREE
Physics	Physics		Bachelor of Science
College of Liberal Arts			
Interdisciplinary	General Studies	Arts Humanities Natural Sciences Social Sciences Business (BAFB only) History (BAFB only) Psychology (BAFB only)	Associate of General Studies
Interdisciplinary	General Studies	Arts Humanities Natural Sciences Social Sciences Business (BAFB only) History (BAFB only) Psychology (BAFB only)	Bachelor of General Studies
Architecture, School of	Architectural Studies		Bachelor of Science
	Interior Design		Bachelor of Interior Design
Art, School of	Art-Communication Design		Bachelor of Fine Arts
	Art-Photography		Bachelor of Fine Arts
	Art-Studio		Bachelor of Fine Arts
History	History		Bachelor of Arts
Journalism	Journalism		Bachelor of Arts
Literature and Language, School of	English	Technical Writing	Bachelor of Arts
	French		Bachelor of Arts
	Spanish		Bachelor of Arts
Performing Arts, School of	Music		Bachelor of Arts
	Music		Bachelor of Music
		Theatre (see Speech)	
Professional Aviation	Professional Aviation		Bachelor of Science
	Aviation Management		Bachelor of Science
Social Sciences	Geographic Information Science - Interdisciplinary	Natural Resources Social Sciences	Bachelor of Science
	Geography		Bachelor of Science
	Political Science	Pre-Law	Bachelor of Arts
	Sociology		Bachelor of Arts
Speech	Speech	Speech Communication Theatre	Bachelor of Arts
	Preprofessional Speech-Language Pathology		Bachelor of Arts

* Pre-Dental and Pre-Medical requirements may be met through the curricula of each of the following departments: Biological Sciences, Biomedical Engineering, and Chemistry. The Pre-Physical Therapy requirements may be met through the curricula of both the School of Biological Sciences and the Health and Exercise Sciences Department (Kinesiology and Health Promotion –Clinical Concentration).

LOUISIANA TECH UNIVERSITY

GRADUATE DEGREES

DEPARTMENT (UNIT)	MAJOR	CONCENTRATION	DEGREE
Graduate School			
Interdisciplinary	Computational Analysis and Modeling		Doctor of Philosophy
College of Applied and Natural Sciences			
Biological Sciences, School of	Biology	Cell and Molecular Biology Environmental Biology Organismal Biology	Master of Science
Interdisciplinary	Molecular Sciences and Nanotechnology		Master of Science
Health Information Management	Health Information Management		Master of Health Information Management
Human Ecology School of	Family and Consumer Sciences	Consumer Sciences Family and Child Development Family and Consumer Sciences Education	Master of Science
	Nutrition and Dietetics	Clinical Dietetics Community Dietetics	Master of Science
	Dynamics of Domestic Violence – Interdisciplinary		Graduate (Post- Baccalaureate) Certificate
College of Business			
Accountancy, School of	Accounting		Master of Professional Accountancy
Business	Business Administration	Accounting Computer Information Systems Finance Management Marketing Quantitative Analysis	Doctor of Business Administration
	Business Administration	Accounting Computer Information Systems Economics Finance Information Assurance Innovation Management Marketing Quantitative Analysis	Master of Business Administration
Management and Information Systems	Information Assurance		Graduate (Post- Baccalaureate) Certificate
College of Education			
Curriculum, Instruction, and Leadership	Curriculum and Instruction		Doctor of Education
	Curriculum and Instruction		Master of Science
	Educational Leadership		Doctor of Education
	Educational Leadership		Master of Education
	Early Childhood Education - (PK-3)		Master of Arts in Teaching
	Early Interventionist – Birth to Five		Master of Arts in Teaching
	Elementary Education – Grades 1-5		Master of Arts in Teaching
	Middle School Education Grades 4-8 - Mathematics		Master of Arts in Teaching
	Middle School Education Grades 4-8 - Science		Master of Arts in Teaching
Multiple Levels – Grades K-12	Art Education – Grades K-12 Vocal Music Education – Grades K-12	Master of Arts in Teaching	

DEPARTMENT (UNIT)	MAJOR	CONCENTRATION	DEGREE
		Instrumental Music Education – Grades K-12 Health & Physical Education – Grades K-12	
	Secondary Education – Grades 6-12	Agriculture Education Business Education English Education French Education General Science/Biology Education General Science/Chemistry Education General Science/Earth Science Education General Science/Physics Education Mathematics Education Social Studies Education Spanish Education Speech Education	Master of Arts in Teaching
	Special Education Mild/Moderate Grades 1-12		Master of Arts in Teaching
	Visually Impaired		Master of Arts in Teaching
Health and Exercise Sciences	Health and Exercise Science	Sports Performance Exercise Science Adapted Physical Education	Master of Science
Psychology and Behavioral Sciences	Counseling Psychology		Doctor of Philosophy
	Counseling and Guidance	General Counseling School Counseling	Master of Arts
	Educational Psychology	Orientation and Mobility Research Psychoeducational Research and Education	Master of Arts
	Industrial/Organizational Psychology		Master of Arts
	Dynamics of Domestic Violence -- Interdisciplinary		Graduate (Post-Baccalaureate) Certificate
College of Engineering and Science			
Interdisciplinary Program	Computational Analysis and Modeling		Doctor of Philosophy
Interdisciplinary Program	Engineering	Engineering Physics Micro- and Nanoscale Systems Materials and Infrastructure Systems	Doctor of Philosophy
Biomedical Engineering	Biomedical Engineering		Doctor of Philosophy
			Joint MD/PhD program with LSU Medical Center, Shreveport, LA, is available in conjunction with the PhD in Biomedical Engineering
Interdisciplinary	Engineering and Technology Management	Engineering Management Management of Technology	Master of Science
Interdisciplinary	Engineering	Biomedical Engineering Chemical Engineering Civil Engineering Electrical Engineering Industrial Engineering Mechanical Engineering	Master of Science
Interdisciplinary	Microsystems Engineering		Master of Science
Interdisciplinary	Molecular Sciences and Nanotechnology		Master of Science
Computer Science	Computer Science		Master of Science
Mathematics and Statistics	Mathematics		Master of Science
Physics	Applied Physics		Master of Science

DEPARTMENT (UNIT)	MAJOR	CONCENTRATION	DEGREE
College of Liberal Arts			
Architecture, School of	Architecture		Master of Architecture
	Art	Interior Design	Master of Fine Arts
Art, School of	Art	Communication Design Photography Studio	Master of Fine Arts
History	History	Southern History History of Culture and Ideas History of American Foreign Policy	Master of Arts
Literature and Language, School of	English	Literature Technical Writing	Master of Arts
	Technical Writing and Communication		Post-Baccalaureate Certificate
Speech	Speech	Speech Communication Theatre	Master of Arts
	Speech Pathology		Master of Arts
	Audiology		Doctor of Audiology

University Academic Calendar

Academic Year 2008 - 2009

Summer Quarter 2008

March 1	International Admissions: Completed applications and transcripts due for all new international students.
May 1	Graduate Admissions: Completed applications / transcripts due to Graduate School for new graduate students.
May 1	Undergraduate Admissions: Completed applications for admission / readmission due to Office.
May 28	Summer Quarter 2008 begins.
May 28	Registration for all students who have not completed registration and fee payment.
May 29	Summer Quarter 2008 classes begin.
July 2	First Summer Session ends.
July 2	Fourth of July holiday begins at end of classes.
July 7	Fourth of July holiday ends, classes resume at 8:00 a.m.
July 7	Second Summer Session begins.
August 8	Last day of Summer Quarter 2008 classes.
August 14	Commencement Exercises - 2:00 p.m., Thomas Assembly Center.
August 14	Summer Quarter 2008 ends.

Fall Quarter 2008

June 2	International Admissions: Completed applications and transcripts due for all new international students.
August 1	Graduate Admissions: Completed applications/transcripts due to Graduate School for new graduate students.
August 1	Undergraduate Admissions: Completed applications for admission/readmission due to Admissions Office.
September 3	Fall Quarter 2008 begins.
September 3	Registration for all students who have not completed registration and fee payment.
September 4	Fall Quarter 2008 classes begin.
November 13	Last day of classes.
November 19	Commencement Exercises - 2:00 p.m., Thomas Assembly Center.
November 19	Fall Quarter 2008 ends.

Winter Quarter 2008 - 2009

September 1	International Admissions: Completed applications and transcripts due for all new international students.
November 3	Graduate Admissions: Completed applications / transcripts due to Graduate School for new graduate students.
November 3	Undergraduate Admissions: Completed applications for admission / readmission due to Admissions Office.
December 2	Winter Quarter 2009 begins.
December 2	Registration for all students who have not completed registration and fee payment.
December 3	Winter Quarter 2009 classes begin.
December 19	Winter quarter holiday begins at end of classes - University closed.
January 5, 2009	Winter quarter holiday ends. Classes resume at 8:00 a.m.
January 19	Martin Luther King, Jr. holiday – University closed.
February 20	Mardi Gras holiday begins at end of classes
February 26	Mardi Gras holiday ends. Classes resume at 8:00 a.m.
March 3	Last day of Winter Quarter 2009 classes.
March 7	Commencement Exercises - 2:00 p.m., Thomas Assembly Center.
March 7	Winter Quarter 2009 ends.

Spring Quarter 2009

December 1	International Admissions: Completed applications and transcripts due for all new international students.
February 2	Graduate Admissions: Completed applications / transcripts due to Graduate School for new graduate students.
February 2	Undergraduate Admissions: Completed applications for admission / readmission due to Admissions Office.
March 10	Spring Quarter 2009 begins.
March 10	Registration for all students who have not completed registration and fee payment.
March 11	Spring Quarter 2009 classes begin.
April 9	Spring holiday recess begins at end of classes.
April 13	Spring holiday recess ends. Classes resume at 5:00 p.m.
May 22	Last day of Spring Quarter 2009 classes.
May 23	Commencement Exercises - 2:00 p.m., Thomas Assembly Center.
May 23	Spring Quarter 2009 ends.

Official University Academic Calendars can be viewed online at URL <http://www.latech.edu/registrar/calendar.shtml> . The University recommends use of the website for complete, up-to-date academic calendar information. Direct questions to the University Registrar (registrar@latech.edu, or 318-257-2176)