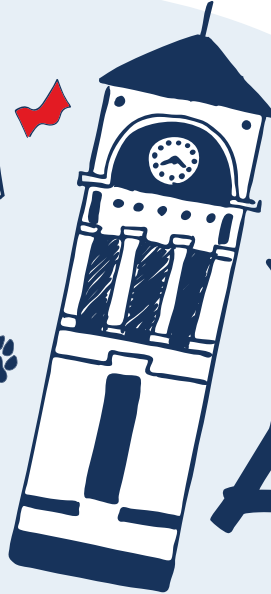




Louisiana Tech University



ΦΜ

ΣΚ

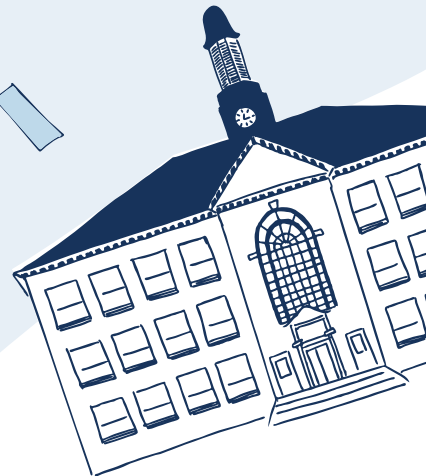
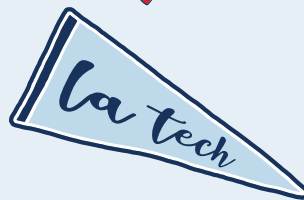
ΑΧΩ

# GO GREEK

PANHELLENIC PRIMARY  
RECRUITMENT

ΔΔΔ

ΚΔ





**CAMERON**

## WELCOME TO RECRUITMENT

Congratulations! For what, you may ask? Well, congratulations on making one of the best decisions of your life. Louisiana Tech is going to prove to be the best fit for you. One of the best ways for you to fall in love with Tech the way that I have is to get involved! So congratulations on another one of the best decisions of your life: signing up for Primary Recruitment! You will be able to experience a unique four days all while making new friends and finding a new home when it is all over. These are memories that you will have for the rest of your life.

Greek life is extremely prominent on campus for many reasons. Greek women make up a large part of the student population, and they do not stop there! Women who are apart of the Panhellenic System are involved on campus, participate in philanthropic events around Ruston, maintain good grades, and hold leadership positions. Greek values encourage every woman to strive for these things.

Some of the things you will gain through Recruitment are new friendships, academic goals and structure, community service opportunities, career connections, a social aspect, and clear values. These are things that every sorority has to offer, but they are all so different. Each chapter on Tech's campus is unique in so many ways, such as their mottoes, national philanthropy (or philanthropies), values, and traditions. One thing is for certain no matter the sorority: you will love it!

We as a Panhellenic Council look forward to seeing you soon! Enjoy your summer and, once again, congratulations on taking the steps toward an amazing future!

### **Cameron**

*2018-2019 Louisiana Tech Panhellenic President*

## DEAR NEW BULLDOGS

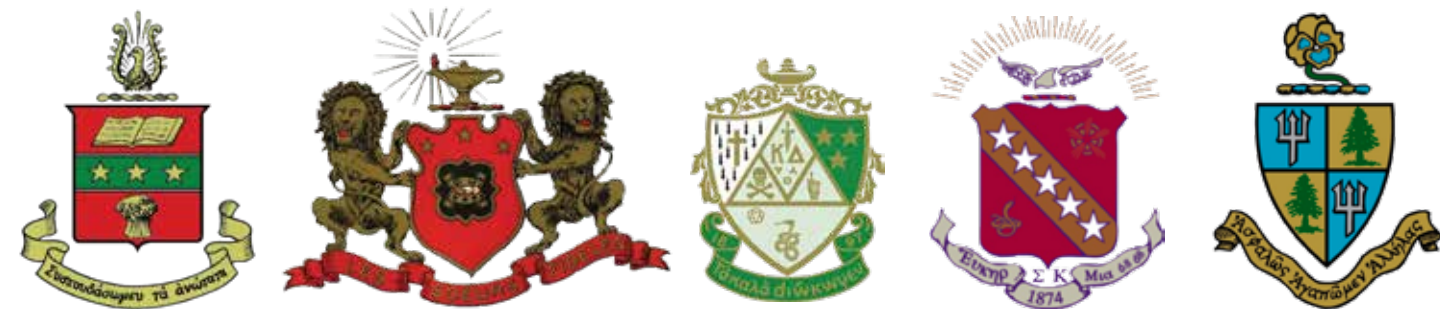
It is my privilege to welcome you to Panhellenic Recruitment 2019! I am excited to have you here and for your interest in Greek life. You're about to experience some of the most memorable days of your time at Louisiana Tech. I hope you'll enjoy these next 4 days and make new friends, new memories, and new sisters in the process. As Greek women, all 5 sororities come together to form a sisterhood that supports and celebrates each other, and I am so excited to welcome you to Louisiana Tech!

### **Lauren**

*Vice President - Recruitment  
Louisiana Tech Panhellenic Council*



**LAUREN**



**ASHLEY**

## DEAR POTENTIAL NEW MEMBER

It is my pleasure as Panhellenic Advisor to welcome you, Class of 2023, to Louisiana Tech University. It no doubt was your commitment to high standards, devotion to academic success and dedication to excellence that led to your acceptance into the Tech Family! I applaud your decision to become a Bulldog and learn more about Louisiana Tech by engaging in Primary Recruitment.

In the upcoming days, you will have the opportunity to meet women from the sisterhoods of Alpha Chi Omega, Delta Delta Delta, Kappa Delta, Phi Mu, and Sigma Kappa. Each group has members who exemplify characteristics such as integrity, leadership, loyalty and pride; tenets that all students should possess upon graduation from Louisiana Tech University. As you go through this week, each chapter will invite you to learn more about the Greek system, their philanthropic commitments, the unique sisterhood activities they offer, and their devotion to scholarship and leadership opportunities - all which will allow for the development of your character. It will be important for you to learn as much as you can about each chapter and her members so that you may best align yourself with an organization that compliments those values for which you were chosen to attend Louisiana Tech. It will be a fun week, full of memories that you will remember for the rest of your life! Enjoy yourself and all the engaging women you will encounter! Most important, stay true to your personal values throughout this process!

The Panhellenic Council and I will be available to help you every step of the way. So good luck, have fun and welcome to Louisiana Tech University! Go Dawgs!

### **Ashley Allen**

*Panhellenic Advisor*



# LOUISIANA TECH UNIVERSITY PANHELLENIC COUNCIL

The Panhellenic Council is the governing body of all five sororities at Louisiana Tech. The council is made up of representatives from all five individual chapters. Panhellenic facilitates the relationship between the sororities and the community.

Panhellenic supports and commends excellence in the areas of scholarship, leadership, athletics, and community service. As a governing body, Panhellenic is responsible for adopting and enforcing certain rules and standards of behavior for all women in the Greek system. We believe that the highest level of trust should exist between the chapters in order to ensure the Panhellenic spirit exists on

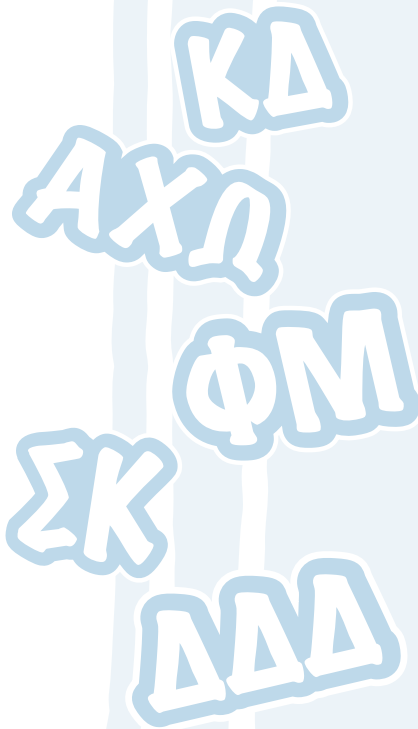
our campus. As a council, we attempt to achieve this goal by holding unity charity and social events such as Christmas on the Lane, progressive dinners, unity fellowships, and open lodge social events.

Panhellenic Council also strives to unite with two other Greek Organizations on campus; the National Panhellenic Council (NPHC) and the Interfraternity Council (IFC). Events such as Greek Week, Homecoming Week, Unity Step Show, and Tech athletic events provide the opportunity to strengthen the purpose of the Greek system on the Louisiana Tech campus and within the Ruston community.



2019 PANHELLENIC COUNCIL

**Front Row:** Alexandra, Gamma Chi Director; Sydney, Director of Programming; Machaela, Director of Scholarship; Cameron, President; Halie, Vice President of Judicial Affairs; Madeline, Vice President of Administrative Affairs; Mary, Panhellenic Delegate; SarahBeth, Director of Finance; **Back Row:** Elizabeth, Director of Public Relations; Megan, Panhellenic Delegate; Annelies, Panhellenic Delegate; Lauren, Vice President of Recruitment; Taylor, Panhellenic Delegate; Taylor, Assistant Vice President of Recruitment; Emily, Director of Programming; Emmy, Gamma Chi Director; **Not Pictured:** Lillian, Panhellenic Delegate.



## PANHELLENIC CREED

We, as undergraduate members of women’s fraternities, stand for good scholarship, for guarding of good health, for maintenance of fine standards, and for serving, to the best of our ability, our college community. Cooperation for furthering fraternity life, in harmony with its best possibilities, is the ideal that shall guide our fraternity activities.

We, as fraternity Women, stand for service throughout the development of character inspired by the close contact and deep friendship of the individual fraternity and Panhellenic life. The opportunity for wide and wise human service through mutual respect and helpfulness is the tenet by which we strive to live.

## RECRUITMENT COUNSELORS

A recruitment counselor, or Gamma Chi, is a junior or senior member of a sorority who disaffiliated from her chapter for the purpose of assisting those who are participating in the recruitment process. She is paired with another Gamma Chi to guide a group of potential new members and answer any questions that they may have. These women have been selected and trained to help you, but they can’t make decisions for you!





## **GAMMA CHI GROUPS**



**Maggie, Mackenzie S, Nellie**



**Courtland, Kensley, Mackenzie G**



**Ainsley, Sadie, Addison**



**Victoria, McKenna, Meagan**



**Hannah, Brynn, Maci H**



**Morgan Catherine, Madisen, Jony**



**Haylea P, Hailey J, Samantha, Kaleigh**



**Maci B, Faith, Malori**



**Abby, Lyka, Madeline**



**Annie, Mackenzie K, Olivia**



**Hannah, Mary, Camille**



**Alex and Emmy**  
GX Directors



**You're part of a great tradition.**

In all areas of business and government, there are outstanding men and women who are very proud of their Greek affiliations. Greek organizations teach priceless skills. A sorority chapter is actually a learning laboratory where one can gain the skills that are necessary and highly valuable in today's changing world. You gain leadership skills, time management assistance, and you learn to be a better team player. As a Greek, you will share ties with such famous women as Dr. Condoleezza Rice, the former U.S. Secretary of State; Kathleen Blanco, former Governor of Louisiana; Linda Dowdy, creator of the children's show Barney; and Jerri Mock, the first woman aviator to fly successfully around the world.

**High academic standards.**

On the Louisiana Tech campus, Greeks are held to high standards both academically and socially. Panhellenic women consistently have a higher grade point average than the average for non-Greek women on campus. We focus on our studies and mentor one another through study groups within the chapters. After every quarter, Panhellenic Council rewards the women who earned a 4.0 GPA with gourmet cupcakes from one of Ruston's local businesses. Scholarship is of the utmost importance in our sororities.

**Giving back to the community.**

While Greeks enjoy a well-rounded social life, that is not the most rewarding part of sorority life. A sorority presents many opportunities for involvement both on campus and in the community, and you are guaranteed to have a full life in every area. Among the most important activities are those that focus on philanthropic causes. Each of our chapters has adopted a local philanthropy in addition to supporting their national philanthropy. All Greeks participate in the Big Event, the SGA community service project to assist the people of Ruston with projects at their homes. They also actively participate in blood drives, canned food drives, and many other projects involving worthy causes in the area. Since the Greek community is known and respected for their philanthropic works, they are often called upon by locals to assist in various ways. Our Greek men and women at Louisiana Tech take pride in opportunities to give back to the school and town that has given so much to us.

**BEING GREEK MEANS...**  
Why it's Great to Be Greek

Greek membership opens doors to so many opportunities during your college years, and the Greek member enjoys a lifetime of benefits including professional networking, community involvement, and instant friendships through alumnae associations located in every area of the country. It is truly the experience of a lifetime.

**You'll always have a home away from home.**

An instant new family... that's what you get when you join a sorority. The moment you pledge, you'll have over 100 new sisters at Louisiana Tech. Freshman year can have some stress associated with it, and having an instant support system can be a great help. Getting to know your sisters is a fun and beneficial experience. You'll have mentors who can help you not only when you are a freshman but throughout your life. There is also a strong group of alumnae associated with each sorority chapter as advisors. They too are available to assist you in any way.

**Campus involvement.**

Sorority life presents so many opportunities for involvement. There is a full menu of activities from which to choose, so you'll never have a boring minute. The members of each chapter all have different interests, and the activities of a sorority reflect the variety of interests in their members. There are study groups, social events (like exchanges with other Greek organizations that are often costume parties), philanthropy events, Bible studies, athletic pep rallies and games, and many sisterhood events. On campus, the Greeks are the most highly participatory group of all organizations. Intramurals in every sport are enjoyed by all chapters. Homecoming in the fall and Greek Week in the spring are especially exciting times, bringing positive attention to the many contributions the sororities and fraternities make to the campus and community.



**ACTIVE**

An initiated member of a fraternity or sorority.

**ALUMNA**

A female member who has graduated from her initiating chapter.

**BID**

An invitation to join a fraternity or sorority.

**BIG SISTER / BIG SIS / BIG**

An active who befriends a new member and becomes like an older sister to her.

**CHAPTER**

An organized, local branch of a fraternity or sorority.

**CANDLELIGHT**

A ceremony in which a member reveals having been given a lavalier, fraternity pin, or engagement.

**EXCHANGE / SOCIAL**

A get together with another group for a party, dinner, or other fun function.

**GREEK**

A term applied to members affiliated with a Greek-letter organization.

**INITIATION**

The ceremony in which a person becomes a member of a fraternity or sorority and receives all associated rights and privileges.

**LAVALIERE**

A necklace with the letters of a Greek Organization.

**LEGACY**

A sister, daughter, or grand daughter of a sorority member.

**NPC**

National Panhellenic Conference; a conference composed of delegates from 26 recognized women's social fraternities.

**PANHELLENIC COUNCIL**

The governing body of all NPC sororities at a college or university, consisting of representatives from each sorority on campus.

**PIN / BADGE**

A jeweled representative of the sorority or fraternity's crest that is usually worn above the left breast.

**PHILANTHROPY**

Active effort to promote human welfare.

**POTENTIAL NEW MEMBER**

A college or university student who is becoming oriented with all sororities on a college campus in order to secure a pledge of membership.

**QUOTA**

The number of new members, determined by the local college Panhellenic, which any Greek chapter may pledge during a specified time.

**RECRUITMENT COUNSELORS**

Sorority members who have disassociated themselves from their chapters during recruitment to answer any questions a potential new member may have about recruitment.

# “MEMBERSHIP HAS ITS PRIVILEGES... AND ITS RESPONSIBILITIES”

When you accept a bid from a sorority, you become a new member of that chapter. You'll be a part of a new member class; a group of young women who have chosen that sorority during recruitment and accepted the invitation to membership. The new member experience can be one of the most memorable times during your college years.

Your new sisters will make you feel comfortable and will include you in fun sisterhood events and other types of activities. There will also be an orientation or “new member” period. Before the new member can be initiated, she must fulfill the sorority’s requirements that may include learning its history, purpose, and goals. This is information that a new member should know in order to fully understand the scope of the organization she has joined.

It’s important for a new member to understand that once she’s initiated, she can never join any other National Panhellenic Conference Sorority. That’s one of the most important agreements that exist among the 26 member sororities of the conference. If the new member decides not to be initiated, she is eligible to join another sorority, but **ONLY AFTER ONE CALENDAR YEAR HAS ELAPSED**. This is important information for any prospective new member to know.

The new member period can be one of the most positive and rewarding experiences of your career. There are no demeaning or degrading requirements. Hazing is strictly forbidden by each national sorority, the National Panhellenic Conference, Louisiana Tech University, and the State of Louisiana.

Sorority membership is an investment in your personal growth. It’s your responsibility to take advantage of the opportunities offered to you by your sorority membership. You'll be expected to participate in activities, to add your time and talents to the success of your chapter. Your academic success is the highest priority, and the sorority expects you to be your best. Each sorority sets high standards for behavior and participation. You will be expected to be fully aware of those standards and rise to meet them.

There is a financial obligation for all sororities as well. Chapters are run in accordance with good business practices, and the dues and fees of the members support the activities and the lodges. Social activities and philanthropies are also supported by member dues. Each sorority has its own fee structure, and you should be sure to ask the sorority about their financial expectations. Here are the average costs for the sororities at Louisiana Tech.



| Greek Chapter     | Fall Quarter | Winter Quarter | Spring Quarter | Annual    |
|-------------------|--------------|----------------|----------------|-----------|
| Alpha Chi Omega   | \$770*       | \$390          | \$390          | \$1550    |
| Delta Delta Delta | \$676.50*    | \$440          | \$440          | \$1556.50 |
| Kappa Delta       | \$580*       | \$270          | \$270          | \$1120    |
| Phi Mu            | \$640*       | \$340          | \$312          | \$1292    |
| Sigma Kappa       | \$665*       | \$234          | \$300          | \$1199    |

\*Includes fees for new members. / Average Monthly Fees: \$110

# POTENTIAL NEW MEMBER BILL OF RIGHTS

## As a New Member, you have the right to....

- Be treated as an individual.
- Be fully informed about the recruitment process.
- Ask questions and receive true and objective answers from recruitment counselors and members.
- Be treated with respect.
- Be treated as a capable and mature person without being patronized.
- Have and express opinions to recruitment counselors.
- Have inviolable confidentiality when sharing information with recruitment counselors.
- Make informed choices without undue pressure from others.
- Be fully informed about the binding agreements implicit in the Membership Recruitment Acceptance Binding Agreement (MRABA).
- Make one’s own choice and decision and accept full responsibility for the results of that decision.
- Have a positive, safe, and enriching recruitment and new member experience.





# 2019 PRIMARY MEMBERSHIP RECRUITMENT RULES

1. Any self-identifying female fully enrolled at Louisiana Tech is eligible to participate in Primary Membership Recruitment (PMR).

2. There should be no recruitment of high school students during the school year and summer.

3. High school students may not be invited to chapter-sponsored events. They may be invited to attend overall Greek events hosted by Panhellenic.

4. High school students, who have a prior relationship with sorority members, may attend chapter philanthropy events when the event is open to the public. Chapter members may not send formal invitations to high school students, which includes but is not limited to electronic invitations or US mail.

5. From the last day of spring quarter until the end of PMR, no high school student or potential new member may visit a sorority lodge except for events and activities sponsored by Panhellenic.

6. From the last day of spring quarter until the end of PMR, no sorority member may purchase and/or give anything to a PNM (outside of her own family). Gifts that are Greek-oriented may not be given to anyone. These items include but are not limited to jerseys, sorority paraphernalia and any gifts, meals or other items intended to impress or engender goodwill from the potential member. Summer contact with a potential member will be limited to recruiting Greek.

7. In accordance with an NPC unanimous agreement, no membership recruitment activity shall include men or alcohol. This policy shall be in effect from the beginning of PMR until 24 hours after the acceptance of bids to membership.
8. Potential members may reside in the University housing during PMR. Commuters and dorm residents are required to follow all PMR rules and must attend designated Gamma Chi group meetings.

9. Potential new members will attend each sorority's Open House event, which will last 35 minutes per event. The subsequent event invitations the potential new member is allowed to accept is as follows:
  - Max of 4 invitations to Sisterhood, which will last 40 minutes per event.
  - Max of 2 invitations to Preference Day, which will last 45 minutes per event.

10. Each PNM must attend the maximum number of parties allowed (if invited), or Panhellenic Council will release her from PMR. In case of emergency or illness, the PNM should notify the Panhellenic Council or advisor so that the situation may be reviewed.

11. No food shall be served to PNM's at a sorority lodge during a recruitment event.

12. Each potential member must sign her preference card immediately after the last preference event she attends. Strict silence follows the signing of preference cards and shall last until the potential new member reports to the sorority from which she accepts a bid.



# 2019 RECRUITMENT SCHEDULE

## Wednesday, September 4, 2019 - Convocation

|                        |               |      |
|------------------------|---------------|------|
| Check-In               | 1:00 - 3:00pm | TONK |
| New Member Convocation | 3:00 - 6:00pm | TONK |

## Thursday, September 5, 2019 - Open House Round

|         |               |               |
|---------|---------------|---------------|
| Party 1 | 6:00 - 6:35pm | Sorority Lane |
| Party 2 | 6:50 - 7:25pm |               |
| Party 3 | 7:40 - 8:15pm |               |
| Party 4 | 8:30 - 9:05pm |               |
| Party 5 | 9:20 - 9:55pm |               |

## Friday, September 6, 2019 - Open House Round

|          |               |               |
|----------|---------------|---------------|
| Party 6  | 5:30 - 6:05pm | Sorority Lane |
| Party 7  | 6:20 - 6:55pm |               |
| Party 8  | 7:10 - 7:45pm |               |
| Party 9  | 8:00 - 8:35pm |               |
| Party 10 | 8:50 - 9:25pm |               |

Released PNM's from Open House Round will be contacted by 7am Saturday, September 7

## Saturday, September 7, 2019 - Sisterhood Round

|          |                 |               |
|----------|-----------------|---------------|
| Party 1  | 9:00 - 9:40am   | Sorority Lane |
| Party 2  | 9:55 - 10:35am  |               |
| Party 3  | 10:50 - 11:30pm |               |
| Party 4  | 11:45 - 12:25pm |               |
| LUNCH    | 12:30 - 1:15pm  |               |
| Party 5* | 1:30 - 2:10pm   |               |
| Party 6* | 2:25 - 3:05pm   |               |
| Party 7* | 3:20 - 4:00pm   |               |

Released PNM's from Sisterhood Round will be contacted by 10pm Saturday, September 7

## Sunday, September 8, 2019 - Preference Round/Bid Night

|           |                 |               |
|-----------|-----------------|---------------|
| Party 1   | 8:00 - 8:45am   | Sorority Lane |
| Party 2   | 9:00 - 9:45am   |               |
| Party 3   | 10:00 - 10:45am |               |
| Party 4   | 11:00 - 11:45am |               |
| Party 5*  | 12:00 - 12:45am |               |
| Bid Night | 6:00pm          | Lambright     |

\*Party may not be needed; chapters may not have party.





# VALUES BASED RECRUITMENT

The National Panhellenic Conference (NPC) is a values-based organization. Its 26 member organizations are bound together through the shared values expressed in the Panhellenic Creed. Those values must be portrayed in the activities of College Panhellenics and individual chapters. So, College Panhellenics and individual chapters must ensure that recruitment events are values-based and reflective of the NPC sorority experience.

Expressing NPC sorority values publicly sheds light on the expectations and standards guiding the member organizations and chapters. It assures that the women attracted to our organizations understand and embrace the commitment to living those values.

## What is the purpose of values-based recruitment?

- To ensure the future of chapters
- To make connections and build relationships between chapter members and potential new members (PNMs)
- To discover shared interests and values among chapter members and PNMs
- To display the high standards held by all NPC member organizations

## What are the benefits of values-based recruitment?

- Potential new members (PNMs) seek the same core values, principals and standards as the chapter members.
- Members are engaged in meaningful programming consistent with their own reasons for joining.
- Improved retention rates due to heightened PNM awareness of chapter expectations before joining.

## What are some examples of values?

- Acceptance
- Accomplishment
- Academics
- Caring
- Challenging
- Confidence
- Community service
- Devotion
- Family
- Faith
- Love
- Loyalty
- Respect
- Scholarship
- Sisterhood

# WHAT TO WEAR

## Day 1: Open House

Wear the provided Recruitment t-shirt with tasteful bottoms and comfortable shoes.



## Day 2: Open House

Casual t-shirt or blouse with tasteful bottoms and comfortable shoes.



## Day 3: Sisterhood

Sun dress or a blouse with a skirt or slacks. Your choice of sandals or heels.



## Day 4: Preference Day

This event is the most formal event. A knee-length cocktail dress and heels are recommended.



## Day 4: Bid Night

A T-shirt with casual shorts and athletic shoes. You will change into your bid day shirt immediately after receiving your bid card.



## New Member Ceremony

Some sororities require New Members to wear a pure, white dress and white shoes during ritual ceremonies. You will need to have this by the first week of membership.





# ALPHA CHI OMEGA

Hey girl!

I am so excited for you to start your journey here at Louisiana Tech University! It will be filled with countless memories, friendships, and all kinds of learning! Here you will grow into the beautiful woman you are meant to be, learn lessons that will last a lifetime, and if you're really lucky, you will meet friends that make you question how you made it through life without them! Take a deep breath, girl! These will be the best years of your life—soak it up!

Greek life here at Louisiana Tech is like no other! It is filled with women that will inspire you, challenge you, and support you! Not only in Alpha Chi Omega have I found this support system, but with so many women in our Panhellenic community -- I'm looking at you my amazing fellow presidents! The decision you have made to go through primary recruitment is a brave and rewarding one. These next few days will be the start of your journey here, but no pressure -- YOU'VE GOT THIS! Follow your heart and listen to how you feel about each house and the rest will be history!

These past three years in Alpha Chi Omega have been the best years of my life. I could not be more thankful for this powerhouse of a sorority I love so much. The women of the Beta Psi Chapter, past and present, have taught me more than they will ever know. They have taught me what true friendship is like, how to be patient and kind, and most importantly, how to be a real, strong woman.

REAL. Being real can be tough. Being real means being who you are no matter the consequences. It means showing compassion, vulnerability, and humility. It means holding each other accountable and supporting one another. It's admitting when you're wrong and striving to do better. Being real is brave.

STRONG. Strength is something every woman has inside of them waiting to be unleashed at any moment. Strength is standing up for what you believe in. It's being brave and making your mark on campus organizations like SGA, Union Board, Order of Omega, Student Recruiters, Bulldogs Belles and Beaux, the BCM, your college's honor society, and so many other amazing opportunities Louisiana Tech has to offer. It's pushing yourself and the others around you to wake up every morning and be the best version of themselves. Strength is being a leader. Strength is powerful.

WOMEN. Being a woman is being all of these things and so much more. It means being empowered and empowering other women in return. One way Alpha Chi Omega does is this by supporting victims of domestic violence through our national philanthropy, Domestic Violence Awareness. We also support victims in the Lincoln Parish community through our local shelter, D.A.R.T., the Domestic Abuse Resistance Team.

Being a real, strong woman means sharing a community of women that have the opportunity and ability to change the world. I cannot thank Alpha Chi Omega enough for showing me what these three simple words truly mean. My dream is that you find that same meaning this weekend! I hope these quick glimpses of my beloved sorority show you a small part of the amazing opportunities you have ahead of you. I can't wait to tell you more about it!

See you soon!!

## Macie Morris

*Alpha Chi Omega, Beta Psi Chapter  
Chapter President*



### Fast Facts:

- Nickname:** Alpha Chi
- Values:** Wisdom, Devotion, Achievement
- Colors:** Scarlet and Olive Green
- Flower:** Red Carnation
- Mascots/Symbols:** Lyre and Pearl
- Open Motto:** "Together let us seek the heights"
- National Philanthropy:** Domestic Violence Awareness
- Local Philanthropy:** Domestic Abuse Resistance Team
- Founded:** Depauw University, 1885
- Required GPA:** 2.8



# DELTA DELTA DELTA

Hi ladies!

On behalf of the Epsilon Pi chapter of Delta Delta Delta, I would like to formally welcome you to Louisiana Tech University. We are so excited to have you join the Tech family, and we are even more thrilled that you have chosen to participate in formal sorority recruitment! Formal recruitment is just the beginning of an incredibly fulfilling journey that will carry far past your college career – this is a journey that will last for a lifetime.

As a founding member of the Epsilon Pi chapter and now Chapter President, I can personally attest to the number of positive ways my decision to become a Tri Delta woman has affected my life. My membership has fostered so much personal growth and exposed me to a number of leadership opportunities, and I have met many incredible women who build me up daily and have shaped me into the person I am today. It is both amazing and overwhelmingly encouraging to me that I have the privilege to be a part of such a diverse group of women who continually supports each other and strives to live out our open motto, “Let us steadfastly love one another”.

Tri Delta is an organization that was founded by women for women. Tri Delta provides a lifetime opportunity to live, learn, and lead with purpose in a place that values support, personal growth, high ideals, and friendship. Over 16,000 collegians and 200,000 alumnae across the United States – and Canada – make up our amazing network of sisters today. Tri Delta supports local children’s cancer charities, and stands as one of the most significant contributors to St. Jude Children’s Research Hospital. In 2014, Tri Delta made the single largest fund-raising pledge in St. Jude’s history – to raise \$60 million in 10 years for the hospital. Today, just five years into our commitment, we are already more than halfway there! Our chapter raises tens of thousands of dollars for St. Jude every year through the use of Sincerely Yours, our letter-writing campaign; DHOP, our pancake fundraiser; as well as many other events throughout the year!

When Sarah Ida Shaw founded Tri Delta in 1888 at Boston University, she said “Let us found a society that shall be kind alike to all, and think more of a girl’s inner self and character than of her personal appearance”. This has evolved into Tri Delta’s slogan “Bring You”. Our slogan reflects one of our organization’s ultimate goals, which is to develop women into the best versions of themselves. In Tri Delta, you are a unique and valuable part of a connected whole. We don’t want you to come here and be like us. We want you to come here and be you.

The Epsilon Pi chapter, installed at Louisiana Tech on December 9, 2016, has continued to exemplify diversity and our commitment to “live, learn and lead with purpose”, not only as a collective chapter, but also as individuals. Our chapter is home to women from all over the country who are studying in a number of different majors. Outside of Tri Delta, our members are involved in a variety of other organizations, including Tech Leadership Council, Order of Omega, Union Board, Student Recruiters, College Ambassadors, Bulldog Belles, and various other professional organizations, honor societies, and college-specific clubs and organizations. In addition, a number of our members serve in leadership positions in their respective organizations. No matter what corner of campus you are in, you are sure to find a Tri Delta sister somewhere!

Tri Delta is boldly leading the way - and often setting the standard - on important issues such as: body image, non-discrimination, and leadership development. Tri Delta offers you a lifelong bond of friendship with women who are both like you and completely different from you. I hope that through the recruitment process you are able to find your home away from home, where you discover the kind of sisterhood and connection that I and so many women have found with Tri Delta – a sisterhood that empowers you to grow into the best version of yourself, celebrates you, and offers you an abundance of steadfast love.

We wish you the most wonderful week and memorable college years, and we cannot wait to meet you!

Delta Love,

**Landry Seimears**  
*Tri Delta President*



### Fast Facts:

- Nickname:** Tri Delta
- Values:** Truth, Self-Sacrifice, Friendship
- Colors:** Silver, Gold, and Cerulean Blue
- Flower:** Pansy
- Mascots/Symbols:** Dolphin, Pearl, Pine
- Open Motto:** “Let us steadfastly love one another”
- National Philanthropy:** St. Jude Children’s Research Hospital
- Founded:** Boston University, 1888
- Required GPA:** 2.5





### Fast Facts:

**Nickname:** Kay Dee

**Values:** Confidence, Loyalty, Academic Achievement, Sisterhood.

**Colors:** Olive Green and Pearl White

**Flower:** White Rose

**Mascots/Symbols:** Teddy Bear, Nautilus Shell

**Open Motto:** “Let us strive for that which is honorable, beautiful, and highest.”

**Local Philanthropy:** Louisiana Methodist Children’s Home

**Founded:** State Female Normal School, 1897

**Required GPA:** 2.5

# KAPPA DELTA

Welcome!

Congratulations on making the great decisions to choose Louisiana Tech and participate in formal sorority recruitment. We look forward to meeting you and personally welcoming you to the Tech Family!

As a member of the Greek system at Tech for the past three years, I can attest to the countless positive ways that my membership in Kappa Delta has had on my life; I’m forever grateful for all I’ve gained and stand to gain throughout my life—more than I ever could’ve imagined. Recruitment is an exciting and memorable experience filled with new friends, fun, and sisterhood. It’s the beginning of your campus involvement, an integral part of your success and enjoyment of the college experience. In a sorority, you’ll find women with whom you can share genuine friendships and lots of fun as you work toward shared goals and ambitions. I sincerely hope that you’ll make the decision to go Greek at Tech! We believe it’s a worthwhile investment that you will not regret.

Kappa Delta Sorority was founded on October 23, 1897, by four young women who had an incredible vision of promoting true friendship among college women, all the while instilling values that would encourage members to reach their maximum potential and become their best selves. Our Alpha Chi chapter of Kappa Delta was installed here on Louisiana Tech’s campus on April 25, 1931, Tech’s first national sorority. In our 87 years of rich history, the chapter has grown into a unique and diverse group of Louisiana Tech women, with currently more than 200 members. Embodying our open motto, “Let us strive for that which is honorable, beautiful, and highest,” our Kappa Delta chapter consistently works hard to set high standards for ourselves and to achieve our goals. The Chapter has maintained the highest grade point average among Greeks for the past 26 consecutive quarters and has received multiple honors on the National Kappa Delta level, including being named three times Kappa Delta’s most outstanding chapter in the nation and having three former National Presidents.

Each of our members represents a unique commitment to an area of campus life. We’re active in the Student Government Association, Union Board, Student Advancement Team, Student Recruiters, Order of Omega, Orientation Student Leaders, Tech Leadership Council, and numerous other professional organizations and honor societies. Not only are we involved, but we lead in a variety of areas and encourage and support one another along the way. In the local community, our annual Shamrock 5K run raises funds for our philanthropies—the Louisiana Methodist Children’s Home and Prevent Child

Abuse America. This past year we raised more than ever, close to \$30,000! We are also very involved with the local Girl Scout troops, holding events throughout the year as we focus on empowering and instilling confidence in these young girls. And through countless other efforts and projects, we fulfill our commitment to bettering our community and our world.

Kappa Delta is a special organization that encourages each member to be herself and offers support through every step of college life and beyond. We find friendship, support, and encouragement among our sisters, a special bond that will last a lifetime. We know that membership in a sorority is for a lifetime, which is a unique and rewarding benefit. Kappa Delta truly looks forward to sharing the many aspects of our sisterhood with you as you find your new home away from home!

The next few days are important to all of us, and we want to make the most of every moment of recruitment as you enter this exciting and rewarding new phase of your life. As we’ll demonstrate to you in many ways, Kappa Delta makes such a positive difference in each of our lives.

Wishing each of you a wonderful week and the best experience!

Sincerely,

**Claudia Kemper**  
*Kappa Delta President*





### Fast Facts:

**Nickname:** Phi Mu

**Values:** Love, Honor, Truth

**Colors:** Rose and White

**Flower:** Rose Carnation

**Mascots/Symbols:** Lion and Quatrefoil

**Open Motto:** "Les Soueurs Fideles"  
or "The Faithful Sisters"

**Founded:** Wesleyan College, 1852

**Required GPA:** 2.75

## PHI MU

Hi, Ladies!

On behalf of my Phi Mu sisters, welcome to Louisiana Tech University, and congratulations on your decision to go through Formal Recruitment! Joining a sorority has honestly been the best decision I have made in my collegiate career, and I hope that at the conclusion of recruitment you will understand why I feel this way. This week is only a glimpse into the beginning of a journey that will last well beyond your college years; the friendships and bonds that you will make this week will last a lifetime!

Phi Mu Fraternity was founded by three young women at Wesleyan College in Macon, Georgia, in 1852; it was the second all-women group established in the United States at the time. Our chapter, Alpha Lambda, was installed at Louisiana Tech University on November 13, 1937. Phi Mu was founded on three values that define how we live our lives: Love, Honor, and Truth. Our open motto, Les Soeurs Fideles, is French for "the faithful sisters," which is something that we strive to live out day by day.

Today, the Alpha Lambda chapter of Phi Mu strives to go above and beyond to live our ideals and open motto. We are focused on excelling in the three "A's" of student life at Tech: academics, activities, and athletics. Almost every single member of our chapter is involved in at least two of the 140+ organizations on campus including Spirit Groups, Habitat for Humanity, Student Recruiters, Engineering Associations, Orientation Student Leaders, and Bulldog Belles. We are also a part of many academic and leadership honor societies including Order of Omega, Lambda Sigma, Phi Epsilon Kappa, Alpha Epsilon Delta, and Tau Beta Pi. We recognize that each of our members are unique women, and we highly encourage vibrant living through finding your passion in our campus community.

We take pride in actively giving back to our community and supporting our national philanthropy, Children's Miracle Network Hospitals (CMNH). Our local CMNH hospital is located in Little Rock, Arkansas, and every year, we plan a Sisterhood trip to the hospital. We host one large philanthropy event per quarter with all of the proceeds from our events directly benefiting Arkansas Children's Hospital. This past year, we hosted a Dance Marathon, a Blacklight Dodgeball Tournament, and our annual Spring Gala during Parent's Weekend. We also participate in other organization's philanthropy events such as Circle K's Special Olympics, SGA's Big Event, and other greek philanthropy events. Lending a hand not only on our campus, but in our greater community helps us to strive to live out our creed and core values.

Our sisterhood is one of the strongest qualities we possess, and strengthening that bond is something that we do every chance we get. No matter how busy our schedules may be, time with our sisters is always cherished. In addition to our annual Sisterhood retreats, we have weekly study hours, pinky parties, Bible studies, movie nights at Celebrity Theater, and pot luck dinners. Through our sisterhood, we encourage every one of our members to be the best woman she can be by showing acceptance and unwavering support for every sister. In my years as a Phi Mu, I cannot think of a better reason for joining a sorority than the sisterhood that I have experienced. My sisters have been a constant in my collegiate career, encouraging me in every endeavor. They have supplied infinite amounts of confidence and support and have always celebrated what makes each of us unique, honorable women. I truly hope that this week you find a sisterhood that celebrates you! Our sisters cannot wait to meet you and share our experiences with you.

Phi Mu Love and Mine,

**Maggie Bagwell**

*Phi Mu President*



# SIGMA KAPPA

Dear Potential New Members:

On behalf of the Beta Epsilon Chapter of Sigma Kappa, I am so grateful you have made the decision to be a bulldog at Louisiana Tech University. Go dawgs!! Tech almost instantly became my home away from home and has continued to be a place where so many memories have been made. Part of the transition was so smooth because of my decision to go through recruitment.

While each recruitment experience is unique to each girl that goes through, experiencing Greek life is incomparable and an experience that you will never forget!

Although my recruitment journey was nearly three years ago, I still vividly remember the girls that I interacted with and the memories that I made during those few days. I can remember the anticipation before opening my bid day card that invited me to become a member of Sigma Kappa. Tears filled my eyes as I knew I was home. As my new sisters threw a Sigma Kappa shirt over my head for the first time, I was speechless and unaware of the road that awaited me. I never imagined, on the first day of recruitment, what the next few years of my collegiate life would look like. Bid day is only the beginning of this experience!!

Through Sigma Kappa, I have made meaningful and lasting friendships, learned the value of accountability, and have been given the immeasurable opportunity to explore new depths of leadership within this chapter of women who have become so much more than just sisters to me. Joining a sorority is a lifetime commitment that is held tightly by all of our members. For over 140 years, Sigma Kappa has united women in a sincere bond of friendship, creating a sisterhood that includes over 165,000 members. Sigma Kappa Sorority was founded on November 9, 1874, at Colby College in Waterville, Maine. Our chapter, Beta Epsilon, has been part of the Louisiana Tech University Greek system since 1937. Sigma Kappa aims to help each sister achieve her greatest potential through our four values: Personal Growth, Friendship, Service, and Loyalty. Despite our diversity in membership, we are unified through these values. The bond that Sigma Kappa creates is one of the strongest available in a student organization. We believe, that by finding a group of women with common goals and values, each sister, in return, receives a support system throughout college to help her reach her fullest potential. Louisiana Tech University is a special place to go Greek but an even better place to be a Sigma Kappa! I have never been prouder to wear my letters!

Membership in Sigma Kappa is a balance between academics, philanthropic services, campus activities, sisterhood events, and social gatherings. We believe academics to be the most important. Beta Epsilon has consistently been recognized for its high level of academic achievement, maintaining a 3.35 overall G.P.A. Sigma Kappa participates in campus activities such as the Big Event, Greek Week, intramural sports, Homecoming, Operation Shoebox, and so many more. We have sisters that actively participate and lead in the bulldog community by their involvement as Orientation Student Leaders, Student Recruiters, Union Board, Student Government Association, Order of Omega, Regal Blues, Louisiana Tech Cheer team, and many honor societies. Not only are our members actively involved on campus, but we are also involved in serving the Ruston community and world. Nationally, Sigma Kappa has five philanthropies. Our chapter is dedicated to helping in these philanthropic endeavors through commitment of time, finances, and other resources year-round. We host various philanthropic events annually, including Sigma Stacks and Sigma Kappa Kickball. We consistently desire to expand our fundraising activities and are excited about the opportunities that are to come in this next year. I have so enjoyed this opportunity to reflect and share with you the special place in my heart that this Greek community and Sigma Kappa Sorority has developed within me. I look forward to introducing you to my sisters in Sigma Kappa during recruitment. I am excited for you to hear from these women and learn about their personal experience in the Louisiana Tech and Greek community. I wish you the best as you begin your journey.

Live with Heart,  
**Whitney Renshaw**  
*Sigma Kappa Sorority President*

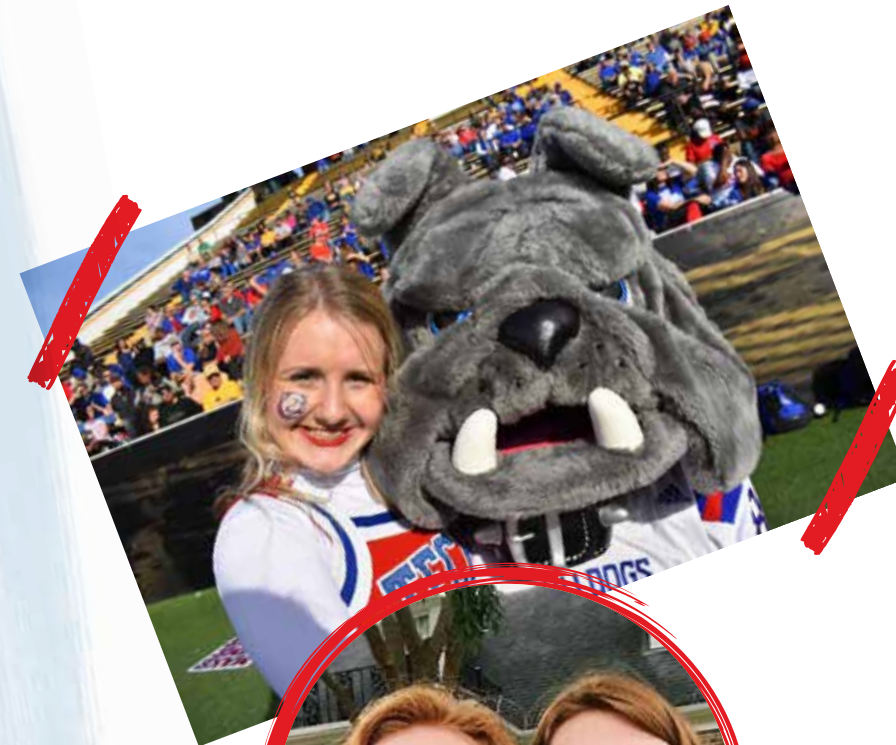


- Fast Facts:**
- Nickname:** Sigmas
  - Values:** Personal Growth, Friendship, Service, Loyalty
  - Colors:** Lavender and Maroon
  - Mascots/Symbols:** Dove and Heart
  - Open Motto:** "One Heart, One Way"
  - National Philanthropy:** Alzheimer's Disease Research Local Philanthropy
  - Founded:** Colby College, 1874
  - Required GPA:** High School 3.2; College 3.0

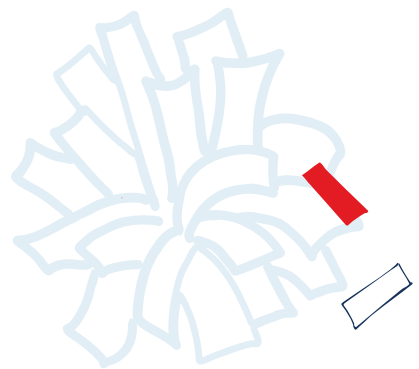
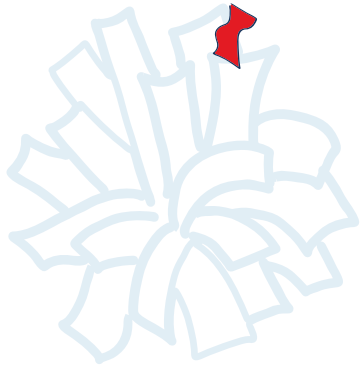


## RECRUITMENT TIPS

- **Check to make sure** that you have the appropriate wardrobe selections for each day.
- **Wear comfortable shoes** or flip flops, and pack heels in your purse to change into when you get to the lane.
- **Bring an umbrella.**
- **Relax** and remember that the sorority women are just as nervous as you.
- **Be courteous** to your group members and Recruitment Counselors by always being on time. Events begin and end at certain times.
- **Confide in your Recruitment Counselor.** She can be your best friend during recruitment week. Feel free to ask her any questions or discuss any problems that you may encounter during the recruitment process.
- **Be open** to all sororities, looking for characteristics that are unique to each.
- **Don't worry** if you find that a sorority member or alumna will not talk to you outside of recruitment functions. There is a silence period when sorority members are to refrain from speaking with potential new members.
- **Get plenty of rest**







*Louisiana Tech University*